

The LION







The Class of 1957

proudly presents

THE LION

Chelmsford High School

CHELMSFORD

MASSACHUSETTS

Foreword

THE LION is many things to many people.

To the Seniors, it is the epitome of four wonderful years.

To the Underclassmen, it is the cherished goal of their rugged years ahead.

To the Graduates, it is an opportunity to recall the years gone by.

To the Parents, it is a tangible record of the achievements and activities of their children.

To all, it is a collection of memories never to be forgotten.

Dedication To...

Our Principal



In recognition of

his leadership in the fulfilling of our ideals of community living,
his leadership in the understanding of the concepts of education
and their application to our daily life, and
his leadership in the development of our lives through his interest
in us as individuals, his appreciation of our weakness and strength,
and his wisdom in guiding us,

we,

The Class of 1957,
dedicate this, our yearbook,

to

JOHN T. CONRAD
Principal and Friend

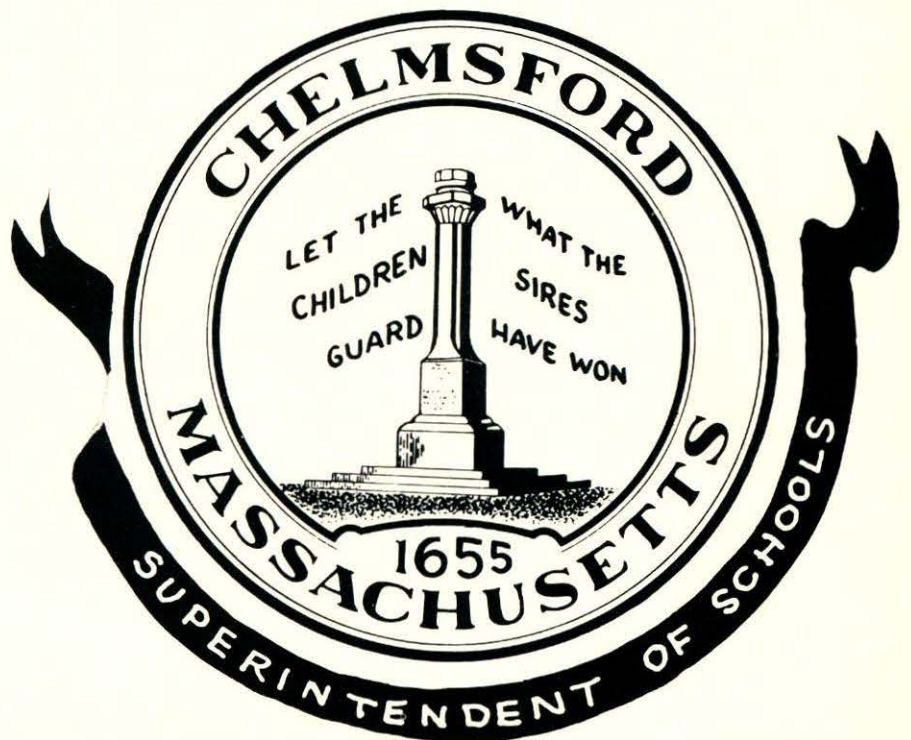
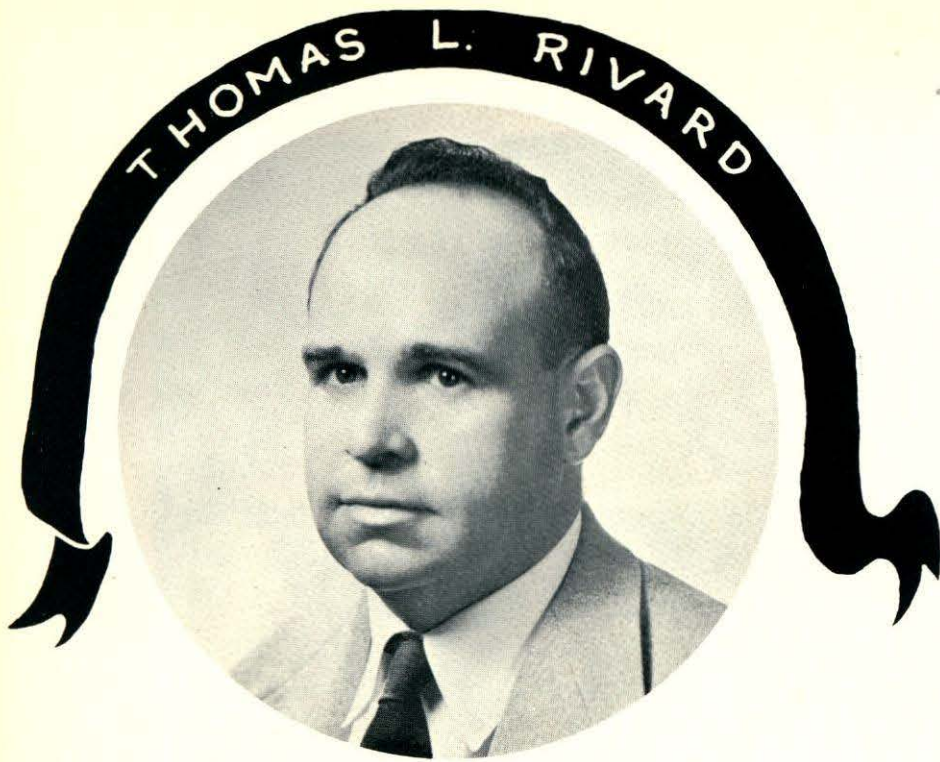
Chelmsford High School



LOOKING AHEAD

Let's face the year with courage, faith, and hope
When under darkening skies we seem to grope,
 One thought can set us free:
 The best is yet to be.
To do the task that lies at hand today,
To share the joy of friends along the way
 Will lift our eyes to see
 The best is yet to be.
We cannot know the path that lies before,
The heights and depths the future holds in store.
 Let's strike this major key:
 The best is yet to be.
We know full well we cannot live by sight
And sense alone, but by that clearer light
 Revealed to you and me:
 The best is yet to be.

CHAS. G. REIGNER



Our Challenge

Today we have reached an important milestone in our lives—graduation. Until now, our parents, teachers, and clergy have encouraged and guided us; they have helped us develop our talents to the highest degree; they have done everything in their power to prepare us for life. Now it is up to us. We are fortunate to live in a country where the fine education available to us may be used as we will. It is our privilege and our duty to repay our nation by using our talents wisely. The abilities that have been developing in us all our lives must now be put to their best possible use. Every one of us has some influence—it may be great, it may be small—on those around us. We must remember that the force we exert regardless of its magnitude must be for good—for the greatest good of the greatest number—or else it ceases to be worthwhile. The world of tomorrow is our world; it is what we make it. "Today we follow, tomorrow we lead".

Board of Editors



Linda Brown
Janice Brown
Joan Bujnowski
Lila Crowley
John Flavell
Peter Goodwill
Marilyn Hicks

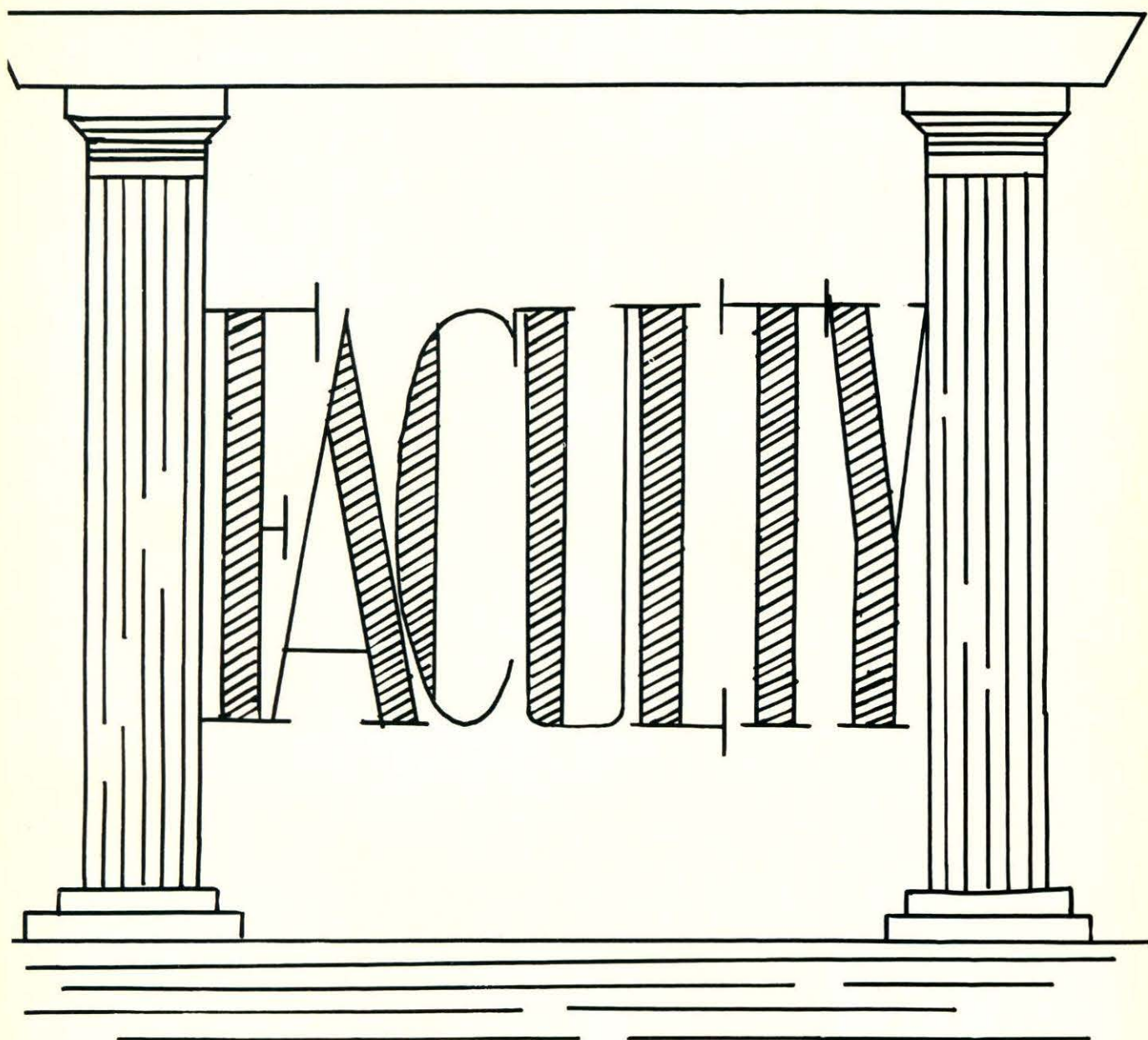
Robert Ingalls
Geraldine Keddle
Paul McIntire
Sandra Ricciardi
Kathryn Thomas
Claire Watt
Sandra Witts

BUSINESS ADVISERS — Ernestine Maynard, C. Edith McCarthy
LITERARY ADVISER — Helen R. Poland

All of us are destined to go our separate ways in this—our graduation year. We have lived together, laughed together, and studied together—we shall continue to do these things the rest of our lives. None of us will be able to retrace these four years of our youth, but this book offers us a chance to recall these cherished memories. As we gaze upon its pages, we shall live again the days of our youthful trials, joys, and affections.







JOAN BUJNOWSKI



Our Faculty



F. Christine Booth, A. B.
Latin
Colby College



C. Edith McCarthy, B. S. Ed.
Vice Principal
Bookkeeping - Typewriting
Salem Teachers College



Ernestine Maynard, B. S. Ed.
Secretarial Practice - Stenography
Salem Teachers College



Helen R. Poland, A. B.
English
Boston University



Charlotte S. Carriel, B. A., Ed., M.
English
Mount Holyoke College
Fitchburg State Teachers College

*"For high resolve and noble thought,
For wholesome lessons wisely taught,
Give gratitude and thanks."*



Marjorie B. Scoboria, B.A., M.A.
Mathematics
Wellesley College
Radcliffe College



Murray B. Hicks, B. S.
Chemistry, Physics
Massachusetts State College



Mildred M. Hehir, A. B., Ed. M
French
Regis College
Fitchburg State Teachers College



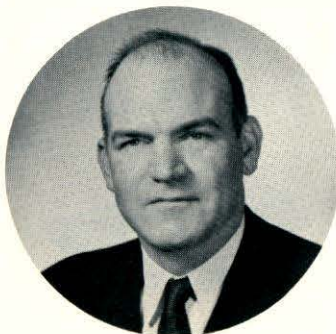
Shirley H. Hardy, B. S. Ed.
Typewriting - Bookkeeping
Boston University



Joseph P. Nolan, B. S.
Mathematics
Social Studies
Canisius College



John J. Dunigan, A. B., Ed. M.
Social Studies
St. Anselm's College
Boston College



Thomas Green, A. B. Ed. M.
Guidance Director
Brown University
Boston University



Costas Kevghas, A. B., M. A.
English
Suffolk University
Suffolk Graduate School



Martha F. Kinneen, A. B.
English
Emmanuel College



Francis J. Byrne, B. S. S., Ed. M.
United States History
Holy Cross College
Boston State Teachers College



Stanley J. Suchodolski, B. S.
Mechanical Drawing
Algebra, Geometry
Fitchburg Teachers College



Donald A. Hankinson, B. S., Ed. M.
Business Law - Sociology
J. B. T.
Fitchburg Teachers College



Alfred Girolamo, B. S. Ed.
General Science
Applied Science
Boston University



Margaret M. Kavanagh, A. B.
Civics
English
Emmanuel College



Vincent C. Foderaro, B. A.
Biology
Suffolk University



Walter J. Kirby, B. S., Ed. M.
Mathematics, Science
Columbia University



Paul E. Bordelcau, B. M., M. M., Ed.
Band and Glee Club Director
N. E. Conservatory of Music
Boston University



Eugene G. Macomber, B. S.
Director of Boys' Physical Education
Drake University



Carol J. Murphy, B. S.
Director of Girls' Physical Education
University of New Hampshire



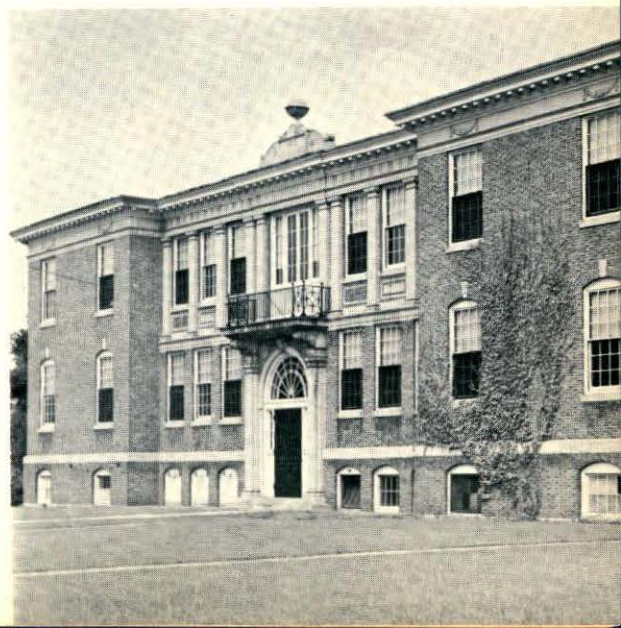
Eleanor M. O'Neil, A. B., M. A.
Director of Art Education
Regis College
Pius XII Institute, Italy



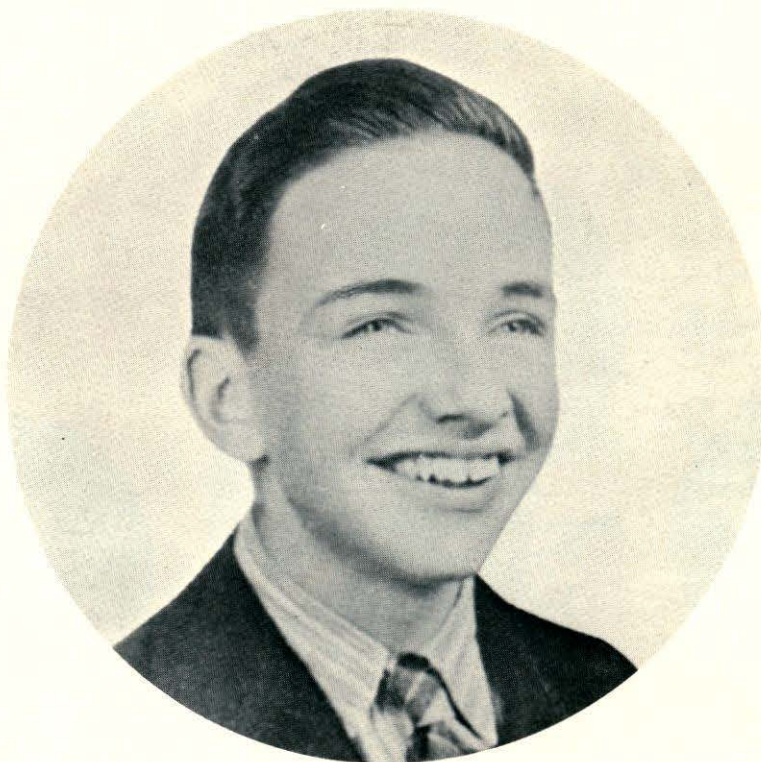
Jessie M. Groves, R. N.
School Nurse
Soldiers Memorial Hospital
Royal Victoria Hospital
Metropolitan State Hospital



Helen M. Jewett, R. N.
School Nurse
St. Joseph's Hospital
American Red Cross Nurse
(On Sick Leave)



IN MEMORIAM



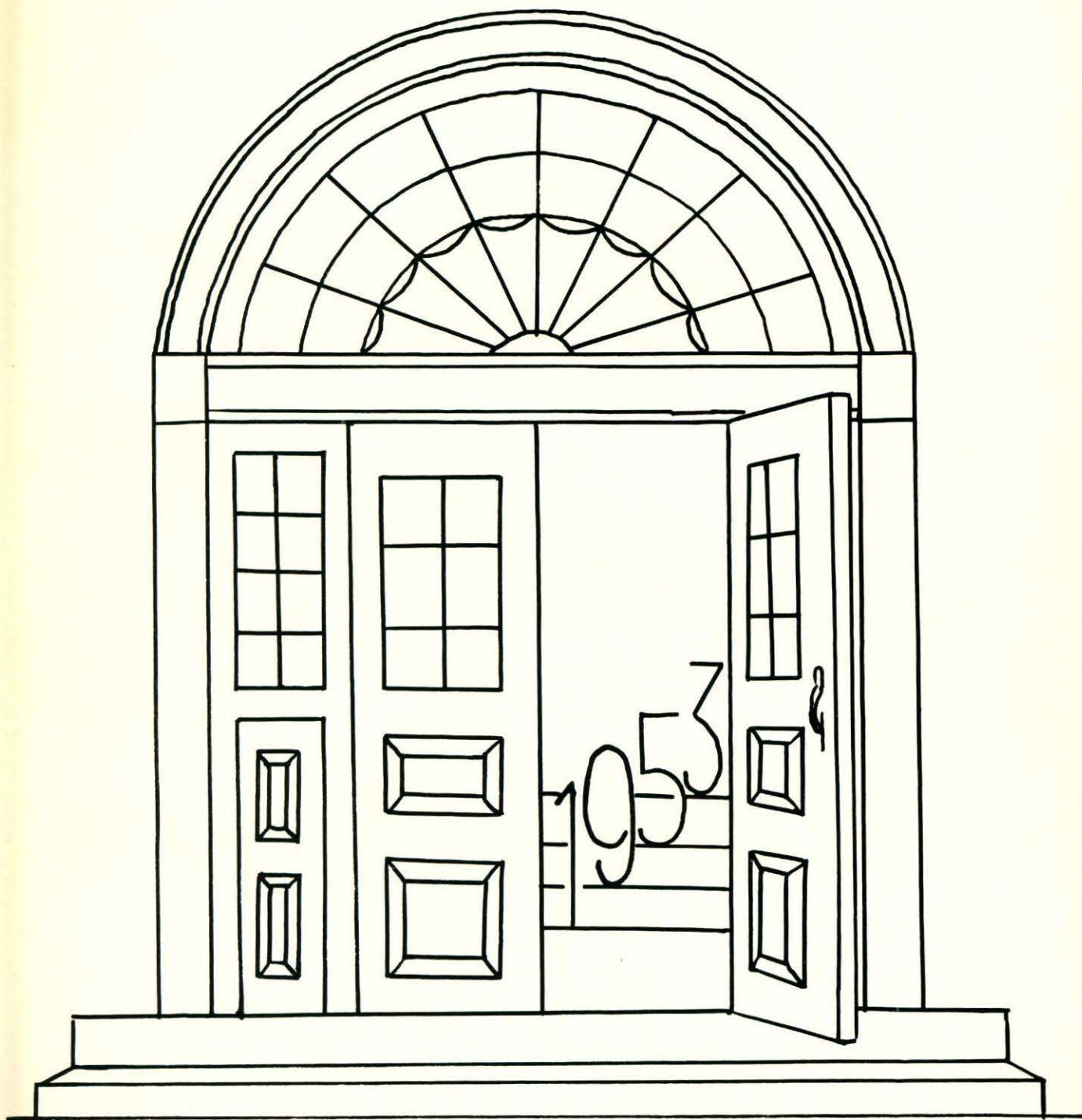
John Charles MacLeod

Born — November 28, 1938

Died — June 25, 1954

*"God calls our loved ones, but we lose not wholly
What He hath given;
They live on earth, in thought and deed, as truly
As in His heaven."*

JOHN GREENLEAF WHITTIER



Joan Bykowski

We enter to follow...



Graduation Speakers



Cap and Gown Committee



Class Prom Committee

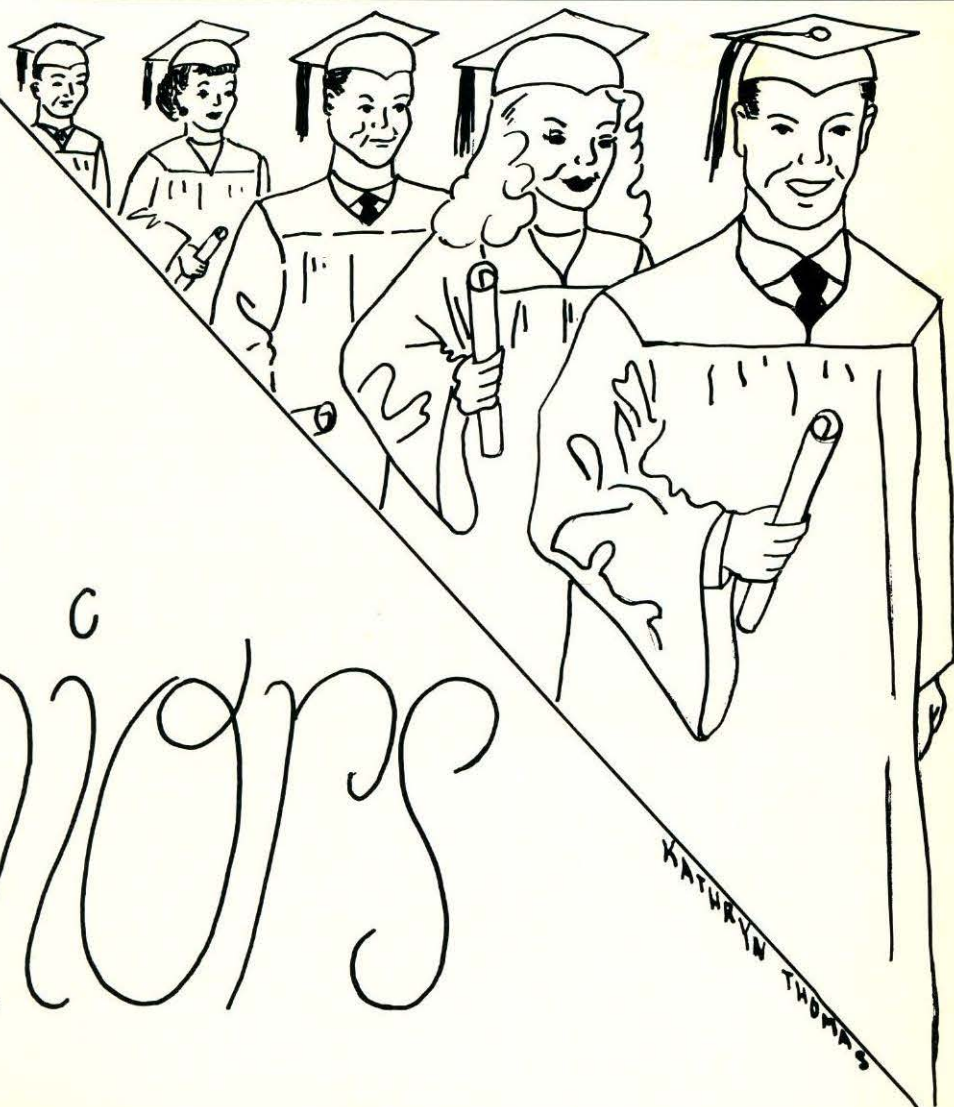


Class Day Committee



Class Motto Committee

57



Seniors

KATHRYN THOMAS



GEORGE DOUGLAS HOUSE

61 Proctor Road

South Chelmsford

Class President

| | |
|---|----------------------------------|
| Class President 1, 2, 3, 4 | Glee Club 1, 2, 3 |
| A. A. Member 1, 2, 3, 4, Representative 1 | Football 1, 2, 3 |
| Boys' State Award 3 | Talent Show 2, 3, 4, 1st prize 2 |
| Band 1, 2, 3 | United Drive 2, 3, 4 |
| Band Concert 1, 2, 3 | Starving Seven, Band 3 |
| Student Council 3, 4 | Junior Red Cross 1, 2, 3, 4 |

"Housy"—"the meeting will now come to order"—hails from the South, of Chelmsford—heckles Dick—natural instinct for mechanics—lives for his lush lavender Lincoln—startling laugh—will definitely succeed in his chosen field, engineering.

KATHERINE PATRICIA MORROW

108 Dunstable Road

North Chelmsford

Class Vice-President

| | |
|-------------------------------------|--|
| D. A. R. Representative | A. A. Member 1, 4, Representative 2, 3 |
| Class Secretary 1, Vice-President 3 | Student Council 1, 2 |
| Cap and Gown Committee, Chairman | Dramatic Club President 4 |
| Basketball 2, 3, Co-capt. 4 | Graduation and Reception Usher 3 |
| Field Hockey 1, 2, 3, 4 | United Drive 3, 4 |
| Softball 1, 2, 3 | Class Dance Committee 2, 3 |

"Agnus"—unsurpassed basketball captain—better late than never—a Pizza fan—does every job well—a passenger in a grey Buick—"Hey, Sandy, what'd you bring for me to eat?"—her winning smile and personality will aid in her nursing career.



PETER DENIS GOODWILL

47 Proctor Road

South Chelmsford

Class Treasurer

| | | |
|--|-------------------------------|-------------------------|
| Class President 1 | <i>Sheffield High School</i> | Baseball 1 |
| | Basketball 1 | |
| | <i>Chelmsford High School</i> | |
| Yearbook Staff 4 | | Dramatic Club 4 |
| A. A. Member 1, 2, Representative 3, 4 | | Driver Education 3 |
| Baseball 2, 3, Captain 4 | | Booster Drive 4 |
| Basketball 3, 4. | | United Drive 3, 4 |
| Football 2, 3, 4 | | Class Dance Committee 3 |

"Pete"—always collecting \$ \$ for something or other—connoisseur of food—heap big hunter—top three letter man—co-captain of baseball—quiet? only sometimes—entertains the troops at Ken's—has a unique sense of humor—his genial manner will win him a successful future.

LILA MARGARET CROWLEY

35 Second Street

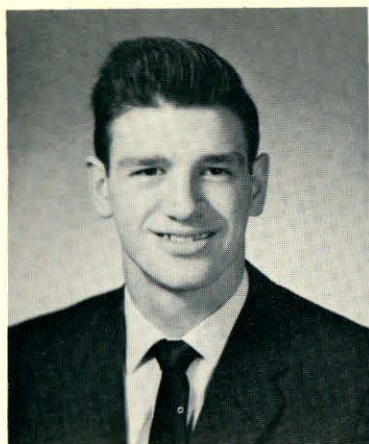
Chelmsford Center

Class Secretary

| | |
|---------------------------------------|--|
| National Honor Society 3, President 4 | Field Hockey 4 |
| Yearbook Staff | Co-chairman ring Committee 3 |
| Class Motto Committee | Softball 3 |
| Basketball 3, Co-capt. 4 | A. A. Member 2, 4, Representative 1, 3 |
| Student Council 3 | Junior Red Cross 3, 4 |
| Graduation Usher 3 | Talent Show 3, 4 |

Full of ideas and animation!—never a dull moment—strangely attracted by Westford, and Mulligan stew—lively basketball captain—perpetual oratory—has her "Hart" set on Massachusetts General in the fall.





RONALD FRANCIS AUBREY

10 Seventh Avenue

North Chelmsford

Intramural Basketball 1

J. V. Basketball 2 - Varsity 3, 4

Football 4

Driver Education 2

Talent Show 2

Booster Club 4

Christmas Dance Committee 4

Glee Club 2

A. A. Member 1, 2, 3, 4

General Chairman of Prom 4

Junior Red Cross 1

"Ronnie"—"Lil Abner" grin—tall, dark, and gangling—three sport champ—all suburban end—"Priscilla!!!"—constantly confusing the teachers—willing worker—Teachers College bound?

JOAN MARIE BACON

3 Russell Road

North Chelmsford

National Honor Society 4

Junior Red Cross 2, 3, 4

A. A. Member 2, 3, 4

Glee Club 1

Office Girl 3

Driver Education and Training 4

Graduation Usher 3

United Drive 3

"Joanie"—a real lady—soft spoken, sincere, gentle—Proctor's #1 girl—Oh! those curls—sports her enviable hand-made sweaters—a buddy of Betty—will make for herself a place among the secretaries of tomorrow.



ELIZABETH ANN BELL

26 Wright Street

North Chelmsford

A. A. Member 1, 2, 3, 4

United Drive 3

Booster Drive 4

Junior Red Cross 1, 2, 3, 4

Homeroom representative 4

Press Club 4

Lamplighters 3

Driver Education and Training 4

Scrapbook Committee 3

"Betty"—real blonde hair and a ready smile—a poetess at heart—an active and interested member of the Junior Red Cross—her perseverance wins—digs Elvis the most—waits for June and then?



JANET BELL

71 North Road

Chelmsford Center

Prom Committee 4

A. A. Member 1, 2, 3, 4, Representative 1, 2, 4

Class Dance Committee 2, 4

Field Hockey 2, 3, Co-capt. 4

United Drive 3, 4

Softball 3, 4

Glee Club 1

Lamplighters - Vice-President 3, 4

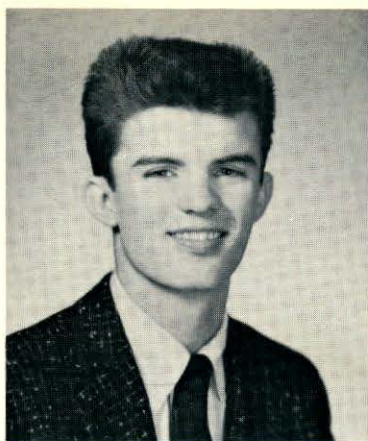
Driver Education and Training 4

Gymnastic Club 2

Junior Red Cross 1, 2, Vice-President 2, President 4

"Jan"—smiling brown eyes, smooth brown hair, and a friendly smile—truly a gracious girl—Doctor Currie's right arm—"Seen Jude?"—field hockey queen—horse rider and enthusiast—college will mold her future.





ROBERT ARTHUR BENNETT

152 Dalton Road

Westlands

A. A. Member 1, 2, 3, 4
Junior Red Cross 1, 2, 3, 4
Class Dance Committee 4

Intramural Basketball 2, 3
Booster Driver 2, 3
Lamplighters 2

"Bob"—one of the troops—can usually be found remodeling his car—practical joker—"Mr. Bennett, get in your own seat."—willing chauffeur—unassuming manner—will make his mark in business.

JANET ANN BENTLEY

7 Academy Street

Chelmsford Center

Orleans High School

Junior National Honor Society, 1, 2
Prize Speaking Competition 1st Prize

Class Play Lead

Chelmsford High School

Graduation Reception Usher 3
Junior Red Cross 3, 4
A. A. Member 3

Dramatic Club 4
Driver Education and Training 4

Has an interesting English accent, the real thing—blouses and ties—oh, those jokes!—Red Sox booster—"What's the trig homework?"—quiet, but has twinkle in her eye—loves (?) P. A. D.—headed for Colby in September.



DONALD R. BERGHOLM

17 Edgelawn Avenue

North Chelmsford

Morey Junior High

Glee Club 1

Class President 1

Junior Red Cross 1

"Don"—quiet, unobtrusive, but determined—faithful to a little lady in Lowell—gets "framed" in history class—ardent admirer of Macbeth—owns a glittering Pontiac—always ready to listen to Allan and David and then to add his two-cents worth—"Good luck in the future, Don."



BEVERLY PHYLLIS BISSENETTE

33 Montview Road

Chelmsford Center

Class Dance Committee 3, 4
Junior Red Cross 2, 3, 4, Representative 3
A. A. Member 1, 2, 3, 4

Driver Education and Training 4
Booster Drive 3
Glee Club 1

"Bev"—fashionable—takes modeling seriously—loves a secret—monopolizes the family phone—ardent KA fan—often heard trying to sell an Imperial—vacations at Ogunquit—"I've got to get down to 115!"—We wish you luck, "Imp," at Westbrook.





ELIZABETH BARBARA BOUMIL

3 Sherman Street

North Chelmsford

National Honor Society 3, 4

Graduation Usher 3

Junior Red Cross 1, 2, 3, 4, Representative 2, 4

Math Club 2

A. A. Member 1, 2, 3, 4

J. V. Basketball 2, 3, Intramural 2

Glee Club and Concert 1

Driver Education and Training 3

Press Club 4

United Drive 2, 3

Lamplighters 3

Softball 3

"Betty"—always laughing—full of fun—"Andy's pal"—"Has anybody seen Mr. Green?"—church hoopster—friend of the knee sock manufacturer—laughs at jokes, but doesn't always get them—college bound in the future.

MARY JANE BROOKS

20 Moore Street

East Chelmsford

Junior Red Cross 1, 2, 4

Driver Education and Training 4

Poster Committee, Chairman 4

Junior Booster Volunteer

Science Club 4

Class Dance Committee 4

United Drive 1, 2, 3

A dainty little miss—shy, kindly, ladylike—responsive to new ideas—loyal to her homework—a close companionship with her sister—loves to draw—plans to become a teacher—Good luck, Mary!



HARRY JEFFERSON BROWN

231 Groton Road

North Chelmsford

Band and Concert 2, 3, 4

Talent Show 2

Junior Red Cross 1, 2, 3, 4

United Drive 3, 4, Captain 3

Driver Education 3

Gymnastic Club 1, 2

Lamplighters 3, 4

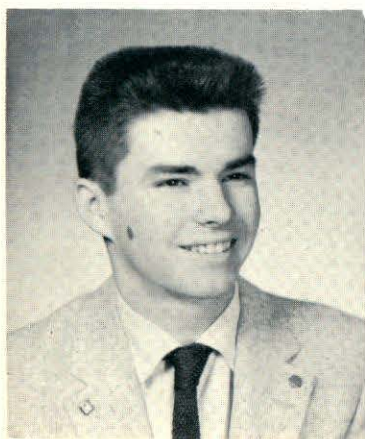
J. V. Basketball 1, Intramural 3, 4

A. A. Member, Representative 1

Tercentennial Pageant 3

Booster Drive 3

"Har"—helps maintain the Triangle's service—likes all girls, but accompanies Paul during his morning conferences—Mr. Duni-gan's right hand man—"Hey, Mac, check that!"—forever tinkering with his Olds—success will be his as he strides into the future.



JANICE ARLENE BROWN

21 Proctor Road

South Chelmsford

Yearbook Staff 4

Press Club 3, 4

Junior Red Cross 3, Representative 3

Office Girl 4

A. A. Member 3, 4

Driver Education and Training 3

United Drive 3, 4

Blood Mobile, Typist 3, 4

Booster Drive 3

Graduation and Reception Usher 3

Dance Committee 3

"Jan"—long dark tresses—a city girl who has adjusted to country life—a busy business student—a serious press club reporter—has her lighter moments of chatter, friendship and sociability—a business woman? Definitely!





LINDA IRENE BROWN

31 Grove Street

Chelmsford Center

| | |
|--|----------------------------------|
| National Honor Society 3, 4 | Driver Education and Training 4 |
| Yearbook Staff 4 | Junior Dance Committee 3 |
| Press Club 3, 4 | Graduation and Reception Usher 3 |
| Glee Club 2, 3, 4 | Decorations for Talent Show 3 |
| Junior Red Cross, Representative 2, 3, 4 | United Drive 2 |

Intelligent questions, right answers, independent thinking—in fact, ability with a capital A—loves history—a Dodger fan—daily debates with Janet over trig—furnishes Betty with Elvis's pictures—Lowell T. C. will help her to be the Teacher of Tomorrow.

JOAN ELIZABETH BUJNOWSKI

107 Mill Road

Chelmsford Center

| | |
|---------------------------------|----------------------------------|
| Driver Education and Training 3 | Dramatic Club 4 |
| Yearbook Staff 4 | Graduation and Reception Usher 3 |
| Junior Red Cross 1, 2, 3, 4 | Gymnastic Club 1 |
| Press Club 3, 4 | United Drive 4 |
| Class Dance Committee 2, 3, 4 | Talent Show 3 |

Chelmsford's Rembrandt—does her work quietly, efficiently, skilfully with minimum of fuss and maximum of success—loves to skate—drives a hot '47 Ford, when it's running—"See the silver in my hair?"—the brush and the palette are the symbols of her future.



MARIE LOUISE CASTELLANO

34 North Road

Chelmsford Center

| | |
|-----------------------------|--------------------|
| Junior Red Cross 1, 2, 3, 4 | A. A. Member 1, 2 |
| Lamplighters 3, 4 | Driver Education 3 |
| United Drive 2 | Talent Show 4 |

"Rocky"—"Hey! you know what?"—excitable and good natured—chief candy girl at Keith's—skirts, sweaters, blouses that blend or match—becoming hairdo, neat and chic—will be "tops" as a hairdresser.



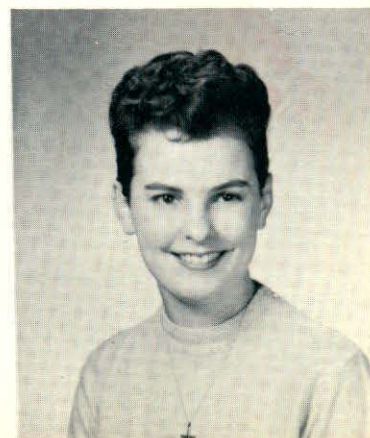
LORRAINE DORIS CHAREST

246 Chelmsford Street

Westlands

| | |
|-----------------------------|---|
| Dance Committee 4 | Music Festival 2, 3, 4 |
| A. A. Member 1, 2 | Intramural Basketball 2 |
| Booster Club 1, 2, 3 | Talent Show 4 |
| Band Concert 2 | Twirlers & Cheerleaders Dance Committee 1, 2, 3 |
| Twirlers 1, 2, 3, Captain 4 | |

Petite beauty of the Senior Class—"Did you see my ring?"—awaits September impatiently—what a laugh!—top strutting major-ette—wedding bells are in the near future.





CORA MARIE CLARK

77 Turnpike Road

Chelmsford Center

Stuttgart American Dependent School, Germany

Pep Club 1

A. A. Member 1

Chelmsford High School

Junior Red Cross 3, 4

Driver Training 3

Collection of pins and charm bracelets—lost temporarily to Germany—soft voice, usually in use—beware, woman driver—demon at table tennis—a successful future teaching America's youth.

THOMAS JOSEPH CONNORS

122 Robin Hill Road

South Chelmsford

A. A. Member 1, 2, 3, 4

Dance Committee 3

Booster Drive 1, 2, 3

Football 2

Intramural Basketball 1, 2, 3

Driver Education 3

Dance Committee 4

Junior Red Cross 1, 2, 3, 4

Gymnastic Club 1, 2

"Tom"—takes a lot of kidding in some classes—"What homework?"—chauffeurs the lads in his hot "Merc"—any supplies needed this week?—T for Tom and for trouble, sometimes—bound for Florida.



DAVID BURNS CORFIELD

198 Boston Road

Chelmsford Center

A. A. Member 1, 2, 3, 4

Driver Education and Training 3

Science Club 4

Junior Red Cross 1, 2, 3, 4

"Dave"—amiable, genial, willing to listen, qualities of a good friend—reticent, but always has the answer—painstaking, patient, persevering, qualities of a scientist—his ability in physics and his know-how in trig point toward an engineering career.



ANITA MAE CROUSE

264 Groton Road

North Chelmsford

Caribou High School

Twirlers 1

Glee Club 1

North Hollywood High School

Driver Education 2

Junior Red Cross 1, 2

Chelmsford High School

A. A. Member 3, 4

Office Girl 4

Junior Red Cross 3, 4

Twirlers 3, 4

"Nita"—bubbling over with energy—"Do I look all right today?"—capable baton twirler with an enviable California strut—"Oh, my English mark!"—success will reward her sincere and willing effort.





MAUREEN ANN CURRAN

997 Princeton Boulevard

North Chelmsford

Junior Red Cross 1, 2, 3, 4

Ability, personality, and lots of fun, that's "Mo"—always a friendly word for everyone—"Oh, Miss Maynard, do I have to?" Jo's favorite conspirator—one of the Commodore Queens—ready to smile her way to success.

ALLAN DAWSON DAVIDSON, Jr.

74 Dunstable Road

North Chelmsford

Band 1, 2

Band Concert 1

A. A. 1, 2, 3, 4

Glee Club 1

Baseball, Manager 2

Driver Education and Training 3

Junior Red Cross 1, 2, 3, 4

United Drive 2

Intramural Basketball 4

Booster Drive 2, 3

Avid reader of catalogues, magazines, newspapers—dismissed from class frequently for Lamplighter duty—daily conference with Corfield and Bergholm—even disposition, relaxed, enterprising—which school offers you success? Lowell Tech, or is there another?



RICHARD EUGENE DeFREITAS

12 Evergreen Street

Westlands

Good Government Day Representative 4

United Drive 2, 3, 4

Class Dance Committee 2, 3, 4

"Starving Seven Band" 3

A. A. Member 1, 3, 4, Representative 2

Dance Band 3, 4

Student Council Representative 2, 4

All State Band 2, 3

Band 1, 2, 3, 4, Concert 1, 2, 3, 4

Booster Drive 3, 4

Glee Club 1, 2, 3

Talent Show 1, 2, 3, 4, 1st Prize 1, 2

"Richie"—"Mr. Music"—talent show winner, outstanding clarinetist, and first horn in the band—lots to offer in math and physics as well —always ready to discuss his "Olds"—ever willing to talk things over with a sophomore—college bound, Northeastern?



JOYCE MARY DIRUBBO

131 Groton Road

North Chelmsford

Glee Club 1, 2

Class Dance Committee 3

A. A. Member 1, 2, 3

Talent Show 2, 3

United Drive 2

Junior Red Cross 4

Dainty, dimpled, but not demure—co-pilot of Pat's beach-wagon—Prince's spaghetti bender—dates are only for Fred—enjoys being in the Talent Show—will make brighter anything she does in the days to come.





BRENDA CAROLYN FALL

117 Dalton Road

Westlands

Glee Club 1

Driver Education and Training 3

A. A. Member 1, 2, 3, 4

Graduation and Reception Usher 3

Junior Red Cross 1, 2, 3, 4

Donates time and services as a Junior Volunteer—quiet and ladylike—forms inseparable trio with Eleanor and Dotty—dreams of Don—faithful supporter of the Rainbow Girls—will find success in her chosen field.

JOHN JAMES FISHER

9 Bradford Road

North Chelmsford

Moody Junior High

Glee Club 1

Public Speaking 1

Chelmsford High

Driver Education and Training 3

Graduation Usher 3

Booster Drive 2, 3, 4

A. A. Member 3, 4

Junior Red Cross 1, 2, 3, 4

United Drive 2, 3

Dramatic Club 4

Science Club 4

Class Dance Committee 4

"Rocky"—modest bookworm—long strides through the corridor—great sense of humor—constantly teased—"Hey, Fish!"—top-rate helper in any subject—plans to study engineering—luck and success to you.



JOHN ALAN FLAVELL

Main Street

North Chelmsford

Yearbook Staff

Class Dance Committee, Chairman 4

A. A. Member 1, 2, 4

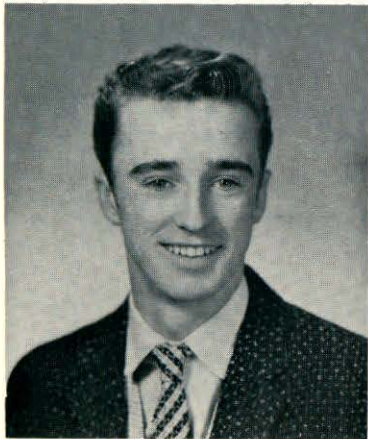
Football 1

United Drive 3, 4

Booster Drive 3, 4

Intramural Basketball 2, 3, 4

"Jackie"—likes sleep, going steady, and green Chevies—dislikes homework, history, and crewcuts—talks up a storm in fair weather and foul—works well on a job—popularity plus—sees the Armed Services in his future.



CLAYTON FREDERICK FOOTE, Jr.

69 Newfield Street

North Chelmsford

Peterborough, N. H. High

Debating Society 2

Baseball 1, 3

"Clayt"—comes to us from the North—seen with a different car every day—"But Mrs. Carriel, I work all night!"—claims half interest in Southwells—often caught reading the morning paper—plans to attend the U. of N. H.





RICHARD LEON GAUTHIER

185 Groton Road

North Chelmsford

Curtis High School

Swimming Team 3
Pool Marshal 3

Classroom Treasurer 3
Golf Squad 3

Chelmsford High School

Class Dance Committee 4
Driver Education and Training 4
A. A. Member 4

Intramural Basketball 4
Junior Red Cross 4

"Dick"—New York's loss, Chelmsford's gain—makes friends readily—walks the halls casually—creates a flutter among the girls—fits easily into our ways—will be doing the same at Lowell Tech.

JOHN GONSALVES

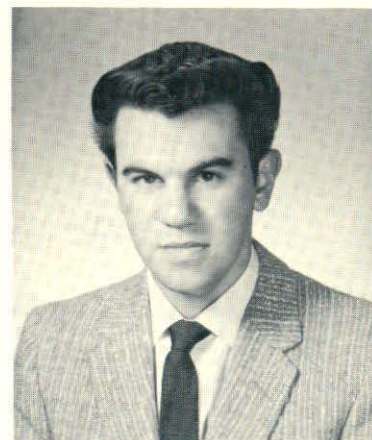
20 Biltmore Avenue

East Chelmsford

Class Dance Committee 4
A. A. Member 1, 2, 3, 4
Booster Drive 1, 3, 4
Intramural Basketball 2, 3, 4

Football 1
J. V. Basketball 1
Driver Education and Training 3
Junior Red Cross 1, 2, 3, 4

"Johnny"—interests are automobiles — drives a warm "54 Chev"—attendant at Tony's Tydol—staunch defender of East—relishes telling a joke—leaves school for work—good luck in the future.



LILLIAN GRACE GRAY

Dunstable Road

North Chelmsford

A. A. Member 1, 3, 4; Representative 2
Press Club 3, 4
Math Club 2
Junior Red Cross 1, 2, 3, 4
Scrap Book Committee 3

United Drive 2
Home Room Representative 3, 4
Driver Education and Training 3
Booster Drive 3, 4
Cap and Gown Committee

"Lil"—always neat and pretty—"Would you explain that, Mr. Hicks?"—Betty's pal—news hound for Press Club—Oh, Johnny! Oh, Johnny!—willing worker in Junior Red Cross—just plain nice and deserves a future to match.



ELEANOR LOUISE HADLEY

7 Clinton Avenue

Westlands

Glee Club 1
A. A. Member 2, 3, 4
Driver Education and Training 3
Office Girl 4

Graduation Usher 3
Softball 3
Junior Red Cross 1, 2, 3, 4

"Ellie"—tranquil, reserved, demure—has the correct answer when asked for it—a keen spectator of sports—hair has a natural curl, lucky girl—Doctor, we give you a future nurse.





JAMES DENNIS HARRINGTON

145 Boston Road

Chelmsford Center

Intramural Basketball 2, 3, 4

Talent Show 2

Gymnastic Club 1, 2

Driver Education and Training 3

A. A. Member 1, 2, 3, 4

Junior Red Cross 1, 2, 3, 4

"Den"—Dennis, the Menace—a ready Celtic smile—wheels a mean "Merc"—energetic worker—regular visitor to Art's Esso emporium—the mighty hunter—the enthusiastic fisherman—his genial ways assure him good fortune.

EDWARD DOMENIC HART, Jr.

32 Sunset Avenue

Westlands

Band 2, 3

Glee Club 3

J. V. Basketball 1, 3

Class Dance Committee 2

Basketball 4

A. A. Member 1, 2, 3, 4

Intramural Basketball 1

Booster Drive 1, 2, 3, 4

Dramatic Club 4

"Eddie"—definitely sports minded—skiing and basketball in the winter—golf the rest of the year—quiet? when he's asleep—"What's wrong with Bermudas?"—our own Arthur Murray—college and then merchandising.



MARILYN HARTLEY

68 Linwood Street

Westlands

A. A. Member 1, 2, 3, 4

Booster Drive 1, 2, 3

Junior Red Cross 1, 2, 3, 4

United Drive 3

Intramural Basketball 1, 2, 3

Office Girl 3, 4

Driver Education and Training 2

Unassuming—fair-haired—not so tall—able to turn out accurate work efficiently—interested in church work—always has time to help others—a bit retiring, but ready to chat and laugh when the opportunity arises—a successful future should be her reward.



HELEN LOUISE HAYES

130 Dalton Road

Westlands

Glee Club 1

Class Dance Committee 4

Junior Red Cross 4

Intramural Basketball 1

Dramatics Club 4

United Drive 2, 3

Booster Drive 4

A member of the pony-tail set—adores the smell of hospitals—"Doug better let me have his car!"—Carolyn's chum—nursing for this gal in the fall.





MARILYN FERN HICKS

34 North Road

Chelmsford Center

| | |
|---------------------------------------|----------------------------------|
| Yearbook Staff | Class Dance Committee 1, 2, 3, 4 |
| Junior Red Cross 1, 2, 3, Secretary 4 | United Drive 4 |
| Dramatic Club, Secretary 4 | Talent Show 1 |
| Booster Drive 4 | Driver Education and Training 3 |
| A. A. Member 1, 2, 3, 4 | Class Ring Committee 3 |
| Graduation and Reception Usher 3 | J. V. Basketball 3 |

"Hicksie"—an interesting combination of mischief and innocence—an experienced saleslady for a town shop—puts a jinx on the family car—has the ability to make more than the grade in whatever she does—will be a boon to better business.

CAROLYN FRANCES HOWELL

74 Linwood Avenue

Westlands

| | |
|-------------------------|-------------------------------|
| Cheerleaders 1, 4 | Driver Education and Training |
| Class Dance Committee 4 | Junior Red Cross 1, 2, 3, 4 |
| A. A. Member 1, 2, 4 | Bloodmobile, Typist, 4 |
| Booster Drive 4 | Talent Show 1, 2 |

What's this little girl made of?—neatly groomed hair—roguish eyes—a desire to champion teenagers under fire—a leaning toward trouble in class—a willingness to serve the guidance department—an agile cheerleader—a business girl next year.



PATRICIA ANN HULICK

22 Swain Road

North Chelmsford

| | |
|----------------------|------------------|
| A. A. Member 1, 2, 3 | United Drive 2 |
| Junior Red Cross 4 | Talent Show 2, 3 |
| Glee Club 1, 2 | |

"Pat"—seldom without Joyce—"Oh, Mr. Byrne!"—golden tresses, some days up, some days down—leaves each day in a cool Chevy beach wagon—faithful to Jimmy—one of the engaged set—a home, a job, which?



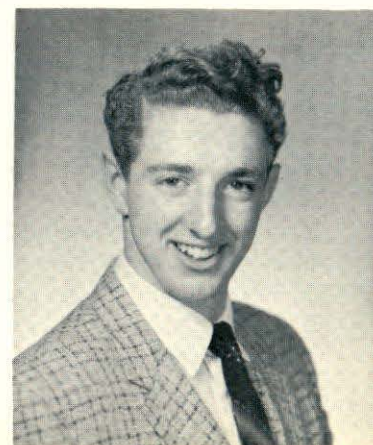
ROBERT BAILEY INGALLS

140 High Street

Chelmsford Center

| | |
|---------------------------|---|
| National Honor Society 4 | Band 2, 3 |
| Harvard Club Book Prize 3 | J. V. Football 1, Varsity 3, 4 |
| Yearbook Staff | Student Council, Treasurer 1, President 4 |
| Class Motto Committee | J. V. Basketball Captain 3, Varsity 4 |
| A. A. Member 1, 2, 3, 4 | United Drive 3, 4 |
| Class Ring Committee 3 | Talent Show 2, 3 |
| Class Dance Committee 4 | |

"Bob"—willing worker—practical joker who gets away with it—seems to be drawn to Grove Street—cool, calm, and collected driver—Student Council prexy—flashy end in football—definitely college material.





JOANNE BERNICE JASON

50 Canal Street

East Chelmsford

J. V. Basketball 1, 2, 3
Press Club 3, 4
Glee Club 1, 2

Driver Education 4
A. A. Member 1, 2, 3, 4
Junior Red Cross 1, 2, 3, 4

"Jo"—beautiful coal-black hair—a poised manner—takes her task seriously and pleasantly whether school work, press club, or tallying an order at the Purity—Basketball—she loves to play—a CYOer—capable and able to shoulder the responsibilities of any business man.

RAYMOND BROWN JOHNSON, Jr.

26 Chelmsford Street

Chelmsford Center

National Honor Society 4 Driver Education and Training 3
Class Motto Committee, Co-chairman 4 Graduation Usher 3
A. A. Member 1, 2, 3, 4 Class Dance Committee 3, 4
Class Ring Committee, Co-chairman 3 Football, Manager 2

"Ray"—casual Casanova—peg pants, bright shirts, a swirl of smooth black hair—a camouflage for ability—a mature reader—"But Miss Scoboria, that's impossible!"—daily lunchroom duty—awaits that promotion from produce—success is his after college.



ALBERTA ELAINE JONES

45 Chelmsford Street

Chelmsford Center

A. A. Member 1, 2, 3, 4 Band Concert 1, 3, 4
J. V. Basketball 1, 2, Varsity 3, 4 Graduation Usherette 3
Field Hockey 1, 2, 3, 4, Co-captain 4 Press Club 4
Junior Red Cross 1, 2, 3, 4 Chairman of Class Outing Committee 4
Student Council Rep. 1, 2, 3 Driver Education and Training 3
Glee Club 1, 3, 4 United Drive 1, 2

"Bert"—personality plus—sharpshooter for the team—slow and easy—homework first?—gets a laugh out of everything—babysitter par excellence—a welcome addition to any group—leaves Chelmsford High to liven up U. N. H.



GERALDINE ANN KEDDIE

11 Clancy Street

East Chelmsford

Yearbook Staff Class Day Chairman
Cheerleaders 2, 3, Captain 4 Intramural Basketball 1, 2
Cheerleaders Dance Committee 2, 4 United Drive 2, 3, 4
Class Dance Committee 4 Office Girl 3, 4
Glee Club 1, 2 Driver Education and Training 4
A. A. Member 1, 2, 3, 4 Junior Red Cross 1, 2, 3

"Gerry"—an atom bomb—peppy captain of our cheerleaders—a lively person who couldn't be kept down—gladly gives a lift to anyone—Del's pride and joy—the champion of the underdog—will keep some office humming.





JESSE KENNETH KEMP

8 Russell Mill Road

Chelmsford Center

A. A. Member 1, 3, 4
Driver Education 2
Driver Training 3

Junior Red Cross 1, 2, 3, 4
Intramural Basketball 1, 2, 3, 4
Tercentennial Pageant 2

"Pete"—tall, dark, and just a wee bit shy of the girls—serious, quiet, but always able to enjoy fun and contribute to it—smiles in an understanding way—his serious approach to work will produce success in his future life.

RONALD WAYNE KILBURN

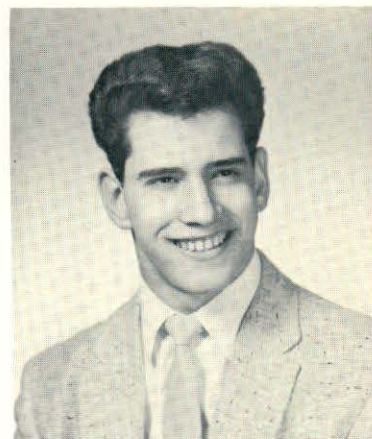
70 Hall Road

Chelmsford Center

Football 1, 2, 3, 4
Glee Club 1, 2
A. A. Member 1, 2, 3, 4

Talent Show 2, 3
Driver Education and Training 3

"Jango"—one of the lads—hot rod fan—has dangerous moods—waits patiently for Sandy, listens quietly to her chatter—tall, dark, debonaire—sincere—loves the out-of-doors—"cool" coiffure—Jungle's stalwart—Best of Luck!



JOHN BRENT KIMBALL

219 Graniteville Road

West Chelmsford

Booster Club Drive 1, 2, 4
J. V. Basketball 1, 2, Intramural 1, 2, 3, 4
Football 1
Golf Team 2, 3
A. A. Member 2, 3, 4, Representative 1
Junior Red Cross 1, 2, 3, 4

Tercentennial Pageant 2
Glee Club 1, 2, 3
Class Dance Committee 1, Co-chairman 3, 4
Talent Show 3, 4
United Drive 2, 3
Driver Education and Training 4

Brightens up our local pharmacy—genial, hail-fellow well met—candid photographer—proud of his license—C. H. S.'s big game hunter—one of the five boys in fourth period English, and enjoys every minute of it—will make his mark in the world.

JUDITH ANN KROLL

43 Proctor Road

South Chelmsford

Prom Committee, Chairman
Class Dance Committee, Chairman 2, 3, 4
Field Hockey 3, 4
Softball 3, 4
Graduation and Reception Usher 3
Junior Red Cross 1, 2, Representative 3, Vice President 4
United Drive 4

Lamplighters 4
Press Club
A. A. Member 1, 2, 3, Representative 4
Driver Education 4
Booster Club 2, 3, 4

"Judy"—a perky pony-tail—a pink and white school girl complexion—one of the energetic equestrians of South—Jan's twin—has a definite interest in Billerica—a great help (?) to Adams Library—college queen in the future.



KATHLEEN ELAINE KULSKI

66 Carlisle Street

East Chelmsford

Class Dance Committee 4

Driver Education and Training 4

A. A. Member 1, 2, 3, 4

Booster Drive 1, 2, 3, 4

Intramural Basketball 1, 2

Glee Club 1, 2

Junior Red Cross 1, 2, 3, Representative 4

Dramatic Club 4

"Kathy"—a pal worth having—smart clothes—proud of her friendship ring and hope chest—CYO—animated talker—gives an opinion. Wait! idea changed—hopes to work in office.



MARILYN LOUISE KYDD

49 Chelmsford Street

Chelmsford Center

Glee Club 1, 2, 3, 4

Prom Tickets and Publicity Committee

Cheerleader 4

Blood Mobile, Typist 4

Intramural Basketball 1

Talent Show 1, 2

Cheerleaders Dance Committee 4

Office Girl 4

United Fund, Usherette 4

Driver Education and Training 4

A. A. Member 1, 2, 3

A bundle of energy—cheerleader with sparkle and verve—loves to Cha, Cha—adores to chit-chat—active appetite—"helps out" at Bon Marche—an alert private secretary-to-be.



RICHARD WILLIAM LEWIS

172 Robin Hill Road

South Chelmsford

Booster Club Drive 1, 2, 4

Driver Education and Training 3

United Drive 1, 2, 3, 4

Junior Red Cross 1, 2, 3, 4

Tall, blonde, and blushing, that's "Dick"—arrives on what were rubber treads—"Anyone going South?"—nothing shy about this fella—sure to reach success as swiftly as a souped-up hot-rod.



JESSAMINE MAE MacKENZIE

6 Frank Street

North Chelmsford

Talent Show 1

A. A. Member 1, 2, 3, 4

Glee Club 1

Booster Drive 3, 4

Driver Education and Training 3

"Jessie"—petite and peppy—happy-go-lucky—"What's your act?"—chauffeured by Carol in a cool Pontiac—rollerskating, anyone?—sensitive, shy, and serious—future undecided.





PAUL JOHN McINTIRE

212 Groton Road

North Chelmsford

Yearbook Staff

Class Dance Committee, Chairman 4

Class Officer 2

Talent Show 1, 4, Prize 1

J. V. Football 1, Varsity 3, 4

Booster Drive 3

J. V. Baseball 1

United Drive 3, 4

A. A. Member 1, 2, Representative 3, 4

Lamplighters 4

Intramural Basketball 2, 3, 4

Driver Education and Training 3

"Mac"—big, brawny, powerful—hard hitting tackle—takes pride in his girl from East and his Ford—other interests of this popular boy are food and sleep—self-employed at Wedge Oil Co.—aiming for Dartmouth.

LIANNE FAY McMILLAN

172 Groton Road

North Chelmsford

Gloucester High

Glee Club 1

Dramatic Club 1

Chelmsford High School

Glee Club 2, 3, 4

Talent Show 2, 3, 4

Lamplighters 3, 4

"Lee"—keeps things rolling in P. A. D.—enviable long hair—three stones in her ring—Ray's her man—"Now at Gloucester"—famous for her laugh—annually makes like a bird in the Talent Show—best of everything for "Lee".



DOROTHY ANNE MORETON

16 Woodbine Street

Westlands

A. A. Member 1, 2, 3, 4

Driver Training 3

Gymnastic Club 1

Junior Red Cross 1, 2, 3, 4

Driver Education 2

Softball 3

"Dotty"—quiet until acquainted, then still quiet—a devoted big sister—always willing to accommodate anyone—makes no fuss about fulfilling a task or doing a favor—it's a Ford, she drives—enjoys her work—success in whatever you do, "Dotty!"



PAULINE MARIE MURPHY

34 Gorham Street

East Chelmsford

Notre Dame Academy

Pageant 1

Chelmsford High School

A. A. Member 2, 3

Class Dance Committee 2

Office Girl 4

"Murph"—her manner, reserved and poised—her voice, controlled and ladylike—and then!—a mass of dark, dark red hair—earns her extra money at Bell's—babbles on about Franny.





RALPH BYAM NICKERSON

5 Sunset Avenue

Westlands

A. A. Member 1, 2, 3, 4
Junior Red Cross 1, 2, 3, 4
Booster Club Drive 2, 3

Intramural Basketball 2, 3, 4
Class Dance Committee 4

"Ralph"—owner of a 48 Ford, usually without a transmission—wherever the troops are gathered Ralph is right there—reluctant student—prefers hot rod books to text books—needs no excuse to collaborate—undecided about the future.

FRANCINE MARY O'SULLIVAN

26 Grove Street

Chelmsford Center

A. A. Member 1, 2, 3, 4
Junior Red Cross 1, 2, 3, Representative 4
Driver Education and Training 3
Dramatic Club Treasurer 4

United Fund Drive Usher 4
Dance Committee 1, 2, 3
Booster Drive 1, 2
Glee Club 1

Field Hockey 4

Prom Committee, Publicity & Tickets, Co-chairman

"Fran"—"Sheena!"—ROTC queen—stately, sedate—willing listener—has a mania for long walks—had her share of ups and downs in field hockey—instigator—faithful correspondent—Simmons bound—a lady in white?



ALICE MARY PERKO

163 Chelmsford Street

Chelmsford Center

National Honor Society 3, 4
Class Dance Committee 4
Graduation and Reception Usher 3
A. A. Member 1, 2, 3, 4

Dramatic Club 4
Intramural Basketball 2
Gymnastic Club 2
Glee Club 1

"Al"—sometimes forgets in history that she is a dignified senior—helps to create goodwill for Dillon's, the cleaner—neatness personified—never a hair out of place nor an eyebrow ruffled—Joan's sidekick—a "Y" basketballer—will make an efficient, capable business woman.



HELEN ROSE POPPLEWELL

168 Dalton Road

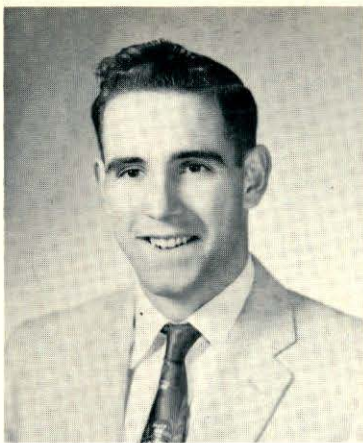
Westlands

A. A. Member 1, 2, 3, 4
Intramural Basketball 1, 2
Talent Show 2
Glee Club 4
Driver Training 4
Driver Education 3

United Drive 2, 3
Booster Drive 1, 2, 3
Junior Red Cross 1, 2, 3, Representative 4
Graduation and Reception Usher 3
Dramatic Club 4

"Widgie"—takes your money at Godins'—always trig, trim, and well tailored—shoulder-length natural curly hair—a fabulous basketball forward, at the "Y"—willing to ride with Marilyn—blushes easily—success will be yours—Will it be business or nursing, Helen?





ROBERT DAVID PRESCOTT

121 Riverneck Road

East Chelmsford

Class Dance Committee 4

Football 1, 2, 3, Co-captain 4

A. A. Member 2, 3, 4, Representative 1

Booster Drive 1, 2, 3, 4

Intramural Basketball 1, 2, 3, 4

Glee Club 1

"Bobbie"—co-captain and flashy quarterback—"The Last of The Prescott Boys from East"—Mary Lou, his one and only—in trouble? Not Bobbie! oh, no!—Purity's stock stamper—Uncle Sam's gun totter.

ARTHUR LEO PROVENCAL, Jr.

23 Dunstable Road

North Chelmsford

Prom Committee

Talent Show 1, 2, 4

A. A. Member 1, 2, 3, 4, Representative 2

Band 1, 2, 3

J. V. Basketball 1, 2

Junior Red Cross 1, 2, 3, 4

Varsity Basketball 3, Captain 4

United Drive 2, 3

Intramural Basketball 1

Driver Education 3

"Archie," Pro—star basketball captain—always ready to talk himself in or out of a situation—easy and assured manner—gallant table swabber in the lunch room—staunch Ford enthusiast—a whiz with the T-square—one of our future engineers?



SHIRLEY PAULINE QUINTIN

Dunstable Road

North Chelmsford

Talent Show 1, 2

Gymnastic Club 1

Glee Club 3, 4

Junior Red Cross 1, 2, 3, 4

Driver Education and Training 4

A quiet girl in a class of chatterboxes—Shirley is truly a reticent maid—connoisseur of music—staunch supporter of the talent show—remember her yodeling?—interested in a nursing career—calmly awaits the future—good luck, Shirley.



SANDRA ARLENE RICCIARDI

47 Groton Road

North Chelmsford

Yearbook Staff 4

Glee Club 1

Cheerleader 1, 4

Driver Education and Training 3, 4

Student Council 4

Junior Red Cross 1, 2, 3, 4

J. V. Basketball 3

A. A. Member 1, 2, 3, 4

Class Ring Committee 3

Intramural Basketball 3

Class Dance Committee 2, 3

Talent Show 3, 4

"Sandy"—full of vim, vigor, and vitality—"What a panic!"—fastidious dresser—a sweetheart, huh, Wayne?—A-1 bookkeeper—knows all the jokes—"When I get my license. . ."—has what it takes to be successful.





MARCIA JEAN RICKER

7 School Street

West Chelmsford

National Honor Society 3, 4
A. A. Member 1, 2, 3, 4
Junior Red Cross 1, 2, 3, 4
Driver Education and Training 3
Graduation and Reception Usher 3
Open House Usher 4

Talent Show 2
Dramatic Club 4
Office Girl 4
Booster Drive 1, 2
United Drive 2, 3

Cool, calm, and collected—affectionately known as “Sticky”—a definite knack for analyzing handwriting—a flair for the stage—an MYU gal—one of Kimball’s summer sundae servers—her many talents will make her an excellent teacher.

GERALD ALLEN ROBINSON

206 Dalton Road

Westlands

A. A. Member 1, 2, 3, 4, Representative 3
Junior Red Cross 1, 2, 3, 4
Baseball 3, Co-Captain 4
Booster Drive 3, 4
Driver Education 4
J. V. Basketball 1, 2, 3
United Drive 3
Intramural Basketball 1

“Jerry”—another physics lover—pals with Ralph—prefers magazines to books—can cut a sharp rug—has morning tete a tete with a little blonde—a Holy Trinity fan—answers with a grin—has high hopes for the future.



KRISTIN JOANNA ALEXANDRIA ROYMANS

140 North Road

Chelmsford Center

National Honor Society 3, Secretary 4
Student Council, Recording secretary 2, Vice-President 3, Assembly Chairman 3
Junior Red Cross 1, 2, 3, Representative 1, Secretary 3
Office Girl 4
Field Hockey 2, 3, 4
A. A. Member 1, 2, 3, 4
Basketball Manager 4
United Drive 2, 4
Glee Club 1, 2, 3
Press Club 4
Graduation Usher 3
Dramatic Club 4

“Kris”—amiable and ambitious—flashing dimples — “You mean you bought oranges, too?”—busy office girl, period 6—flustered and forgetful, but so-o-o sincere—“I don’t get it”—physics fanatic—wonderful worker for worthy causes—“Kris” goes on to success at the school of her choice.



ALBERT GEORGE SCAPLEN

44 Washington Street

North Chelmsford

A. A. Member 1, 2, 3, 4
Junior Red Cross 1, 2, 3, 4
Football 2, 3, Co-captain 4
J. V. Basketball 1, 2, Varsity 3, 4
Baseball 1, 2
Intramural Basketball 1
Band 1, 2
Gymnastic Club 1, 2
United Drive 2, 3

“Bert”—three letter man—co-captain and flashy halfback—has eyes for a little blonde sophomore—honor roll student—curly top—“anyone for a game of hearts?”—ready talker—college days ahead.





ANN MARIE SEHLSTEDT

12 Sharon Avenue

North Chelmsford

National Honor Society 3, Treasurer 4
J. V. Basketball 3, Varsity 4
A. A. Member 1, 2, 3, 4
Field Hockey 3, 4
Driver Education and Training 3
United Drive 2, 3

Softball 3
Press Club 3, 4
Graduation and Reception Usher 3
Junior Red Cross 1, 2, 3, 4, Representative 3
Glee Club 1, 3, 4, Concert 3
Open House Usher 4

"Andy"—wild about hockey—nearly as enthusiastic about playing basketball—work neatly, efficiently done and on time—never a wrinkle, never a hair out of place—who put the dent in your Dad's car, "Andy?"—good luck to you, Ann Marie, at Lowell Teachers College.

ELIZABETH ANNE SIMPSON

203 Park Road

South Chelmsford

National Honor Society 4
A. A. Member 1, 2, 3, 4
Junior Red Cross 1, 2, 3, 4
Intramural Basketball 1, 2, 3
J. V. Basketball 3, Varsity 4
Field Hockey 2

Driver Education and Training 4
United Drive 2, 3
Booster Drive 1, 2, 3, 4
Dramatic Club 4
Graduation and Reception Usher 3
Softball 3

"Buffy"—dynamic personality and winning smile—tosses a mean basketball—active and capable in field hockey—from the "tropical" section of Town—"Buffy" should prove to be an interesting teacher.



NANCY ANN SMALL

3 Hilltop Terrace

Westlands

A. A. Member 3, 4
Twirler 3, 4
Booster Drive 2, 3
Class Dance Committee 4
Music Festival 3, 4

Junior Red Cross 2, 3, 4
Intramural Basketball 2
United Drive 3, 4
Talent Show 4

Tall and slender—pleasing manner—Lorraine's pal—a Y. W. star—really struts her stuff on the football field—gets her rest in study hall—eager to start her career as a model.

CAROLYN LOUISE SMITH

173 Groton Road

North Chelmsford

National Honor Society, Vice-President 3, 4
Junior Red Cross 1, 2, 3, 4, Representative 3
Class Treasurer 1, Class Vice-President 2
Glee Club 1, 3, Band Concert 1, 3
Varsity Basketball 3, 4
Field Hockey 4

Press Club 3, 4
Office Girl 4
Open House Usher 4
Dramatic Club 4
Graduation and Reception Usher 3
Driver Education and Training 3

"Smitty"—whiz at basketball and field hockey—intelligent as she is attractive—0 period office girl—eyes only for Westford—will be a success at her chosen profession of teaching.





BERTHA JEAN SZUCH

28 First Street

Chelmsford Center

Bradford Academy

Mixed Glee Club 1, 2

Class Dance Committee 1, 2

Girls Glee Club 1, 2

Librarian 2

Basketball 1

Sometimes called "Butch" to her chagrin—long, long curls which she threatens to cut—has Northern interests—a lazy drawl—has not been with us all four years—Bertha looks to the world of business for success.

KATHRYN DIANNE THOMAS

43 Bartlett Street

Chelmsford Center

National Honor Society 3, 4

A. A. Member 1, 4

Yearbook Staff

Junior Red Cross 2

Class Dance Committee 1, 2, 3, 4

Graduation Usher

"Kay"—happy, vivacious, and a wonderful friend—loves to watch the boxing matches at F. D., with a "true love"—a loyal trail riding fan from way back—aspires to be as good with the brush as Michelangelo.



PATRICIA ANNE THOMPSON

163 Park Road

South Chelmsford

Senior Dance Committee 4

Intramural Basketball 1, 2

A. A. Member 1, 2, 3, 4

United Drive 1, 2, 3

Math Club, Secretary 2

Junior Red Cross 1, 2, 3, 4

J. V. Basketball 2, 3, Varsity 4

Glee Club 1

Talent Show 3

Driver Education and Training 3

Band 1, 2, 3, Concert 1, 2, 3

Booster Drive 1, 2, 3

"Pat"—future secretary—uniforms send her—"Gads!"—always an innocent smile—flies low in her '46 Olds—part-time Purity gal—loves to chat in history class, or anywhere for that matter—has ability which can take her far—a good job, a good husband, maybe a millionaire.



BRENDA LOCKWOOD VINECOMBE

16 Robin Hill Road

Chelmsford Center

Twirlers 3, 4

Talent Show 2, 4

Dramatic Club 4

Graduation Usher 3

Glee Club 1, 2, 3, 4

Watertown Music Festival

J. V. and Intramural Basketball 1, 2, 3

Junior Red Cross 1, 2, 3, 4

A. A. Member 1, 2, 3, 4

Class Dance Committee 4

Band Concert 1, 2, 3, 4

Driver Education and Training 4

"Steve's" gal—long hair and sparkling blue eyes — ardent French scholar—quick to smile—snappy baton twirler—loquacious in 5th period—which will it be, Brenda, Lowell Teachers or Bridgewater?





SPIRO VROUHAS

Pine Hill Road

South Chelmsford

A. A. Member 1, 2, 3, 4

Band 1, 2, 3, 4

Band Concert 1, 2, 3, 4

Driver Education and Training 3

United Drive 3

Intramural Basketball 2, 4

Glee Club 4

Booster Drive 2, 3

Junior Red Cross 1, 2, 3, 4

Class Dance Committee 4

Spiro—an ardent bandsman—daily date with Miss Scoboria—tries to out-manuever the lunchline at noon—industrious poultry farmer—makes frequent trips to the “Y”—it will be college for Spiro in the fall.

CLAIRE ELAINE WATT

79 Billerica Street

Chelmsford Center

Class Marshal 3

National Honor Society 3, 4

Yearbook Staff

Corresponding Secretary, Student Council 4

Press Club 4

Glee Club 3

Driver Education and Training 4

Field Hockey 3, 4

United Drive 4

Middlesex Women's Club Award 3

Basketball Manager 4

Red Cross Member 1, 2, 3, 4

A. A. Member 1, 2, 4, Representative 3

An efficient and capable student—usually chatting with Berta or Kris—“Ah! Elvis! !”—plays a mean game of basketball, from the bench—enjoyed a fast game of field hockey—plans to keep up excellent work at Jackson.



ANN COLBY WHALEN

8 Proctor Road

South Chelmsford

A. A. Member 1, 3, 4

Junior Red Cross 1, 2, 3, 4

Driver Education and Training 4

Press Club 4

United Drive 2, 3

Booster Drive 1, 2, 4

Graduation Usher 3

Look for her on any prize horse—inseparable pal of Beth—and always conspiring with Janice—“Saw him at lunch time!”—most of the time looking for something to “Reid”—four more years at L. T. C.

WILLIAM HENRY WILLIAMS

33 Garrison Road

South Chelmsford

A. A. Member 1, 2, 3, 4

Junior Red Cross 1, 2, 3, 4

Band 1, 2

United Drive 3, 4

Intramural Basketball 2, 4

“Bill”—topped by real platinum blond bristles—rugged hard-working dairyman—winner of honors in 4H with his tractor—his prize, a trip to Eastern States Fair—active at All Saints affairs—blew a horn for Mr. Bordeleau—successful future farmer of America.





SANDRA RUTH WITTS

95 Stedman Street

Westlands

Yearbook Staff 4

A. A. Member, Representative 1, 4

Graduation and Reception Usher 3

Glee Club 1

Junior Red Cross 1, 2, 3, 4

Class Dance Committee 4

Gymnastic Club 1

Office Girl 3, 4

United Drive 4

"Sandy"—neat, sweet, petite—dawn patrol of the halls with Carole—flips the duplicator crank with ease—human dynamo at the typewriter—quiet? not so much—will contribute ability and stability to any office.

GEORGE SOTER ZAHAROOIS

191 Princeton Street

North Chelmsford

A. A. Member 1, 2, 3, 4

Junior Red Cross 1, 2, 3, 4

Driver Education and Training 3

Booster Club 3

Glee Club 4

Intramural Basketball 2, 4

"Zaha"—ardent follower of C. H. S. sports—wheels a hot "Olds 6"—thinks Macbeth is real gone—reserves an extra place in the lunch line daily—busy business man summers—will it be the service or college in the fall?



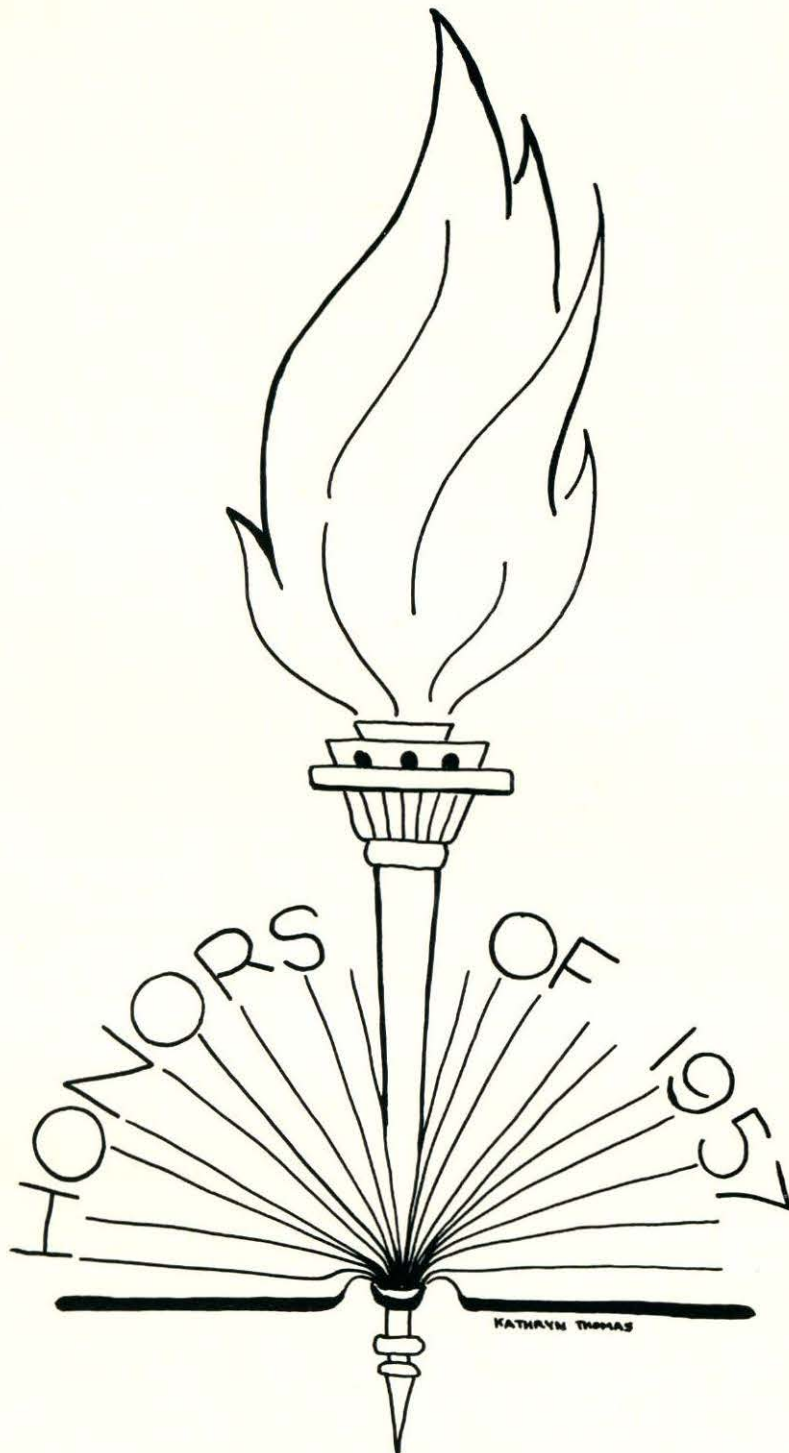
MY DREAM

Someday I would like to see
 A world at peace, but also free,
 Where armies, navies, and police
 Are not needed to keep the peace,
 Where all men have the self same rights
 And racial traits do not cause fights,
 Where from fear no one need run
 To free himself from a Russian gun,
 Where men may hark to many voices
 And cast their votes from sundry choices,
 Where guns are toys and not to be used
 To collect from the poor, their hard-earned dues—
 But if I live to be ninety-nine
 My dream, I fear, I'll never find.



Odds and Ends





The Class of 1957 - Honors

GRADUATION SPEAKERS

Linda Irene Brown

Claire Elaine Watt

Lila Margaret Crowley

Carolyn Louise Smith

HIGH HONOR

Elizabeth Barbara Boumil

Marcia Jean Ricker

Kristin Joanna Alexandra Roymans

HONOR

Alice Mary Perko

Kathryn Dianne Thomas

Joan Marie Bacon

Elizabeth Anne Simpson

Ann Marie Schlstedt

Robert Bailey Ingalls

Raymond Brown Johnson, Jr.

Janet Ann Bentley

Helen Rose Popplewell

Eleanor Louise Hadley

George Douglas House

Judith Ann Kroll

John James Fisher

Lillian Grace Gray

Special Awards

Class of 1956

The following is a list of special awards presented at the graduation exercises, June 13, 1956. Inasmuch as these awards were not made until the night of graduation, it was impossible to record them in the 1956 Yearbook.

THE HARVARD CLUB BOOK PRIZE — Presented by the Harvard Club of Boston to the best all around boy who stands high in scholarship and character in the college course of the Junior Class — "The Harvard Book" — by William Bentinck-Smith, awarded to **ROBERT INGALLS**.

GOOD CITIZENSHIP CERTIFICATE — Presented by the Daughters of the American Revolution for outstanding qualities of dependability, leadership, service and patriotism — awarded to **NANCY MEDIN** who was selected by her classmates and teachers.

READER'S DIGEST — A complimentary subscription to the Reader's Digest for one year to the Valedictorian of the Class of 1956 — **ROBERT PITMAN LAMPREY**.

BAUSCH AND LOMB HONORARY SCIENCE AWARD — Given by the Bausch and Lomb Optical Co. for outstanding accomplishment in the study of scientific subjects — awarded to **EDWARD SPAULDING PERZEL**.

DUNIGAN AWARD — Given by the Chelmsford Teachers Association in loving memory of Hilda B. Dunigan, who taught in Chelmsford High School, from 1928 to 1934, for excellence in shorthand and typewriting as determined by competitive examination, won by **CYNTHIA KAY CHANDLER**.

GAY AWARD — Given by the Chelmsford Teachers Association in loving memory of Dorothy F. Gay, who taught in Chelmsford High School, from 1932 to 1934, for excellence in French as determined by competitive examination, won by **JOSEPH LAWRENCE BOYD**.

FOGG AWARD — Given by the Chelmsford Teachers Association in loving memory of Donald H. Fogg, who taught in Chelmsford High School, from 1940 to 1943, to the highest ranking senior girl who has earned a letter in major sports, won by **ANNE MARIE CROWE**.

KNIGHTLY AWARD — Given by the Chelmsford Teachers Association in loving memory of George R. Knightly, who was a teacher and coach in Chelmsford High School, from 1930 to 1943, to the highest ranking senior boy who has earned a letter in major sports, won by **EDWARD SPAULDING PERZEL**.

LARKIN AWARD — Given by Chelmsford Teachers Association in loving memory of Bernard P. Larkin, who was the band teacher in Chelmsford from 1943 to 1952, to the senior who has contributed the most to the music department in time and effort, won by **PRISCILLA FRANCES HOYT**.

DEXTER AWARD — Given by the Chelmsford Teachers Association in loving memory of Lilla M. Dexter, who taught in the Chelmsford schools from 1942 to 1955, to the highest ranking senior going to a State Teachers College, won by **DOROTHY VROUHAS**.

HOYLE MEMORIAL AWARD — Given by the Chelmsford Booster Club in loving memory of Frank Hoyle, who was the President and organizer of the Boosters Club from 1951 to 1953, and awarded to the senior who has contributed the greatest service to the school during two or more years in high school, won by **RICHARD MASON HICKS**.

UNITED STATES HISTORY PRIZE — a medal presented by the American Legion Post No. 212, of Chelmsford Center, for excellency in United States History — award to **EDWARD SPAULDING PERZEL**.

JOURNALISTIC SCHOLARSHIP — Given by the Chelmsford Newsweekly as determined by competition in recognition of ability to write on an unannounced subject. The amount of this scholarship is \$50 with an additional \$50 if the winner is enrolled in college as a major in journalism, won by **BARBARANN HOWARD**.

BOOSTER CLUB SCHOLARSHIP — Given by the Chelmsford Booster Club to aid in the furtherance of the education of a senior boy and girl. These are \$100 scholarships for which pupils must apply. The selections are made from the applicants by a committee of Boosters and teachers, won by **ELIZABETH ANNE EGERTON**, **JOHN EDWARD WITTS**, and **NANCY MEDIN**.

THE SOUTH CHELMSFORD GUN AND ROD CLUB SPORTSMANSHIP SCHOLARSHIP AWARD — Given by the South Chelmsford Gun and Rod Club to the athlete who best exemplifies the traits of a good sportsman over a period of two or more years of athletic competition, won by **OMER LEO DESMARAIS**.

THE JUDITH DRYDEN MEMORIAL CITIZENSHIP AWARD — Given by the South Chelmsford Village Improvement Association and awarded to the senior who has exemplified in a most marked degree the characteristics of citizenship as evidenced by outstanding traits of social responsibility, maturity of judgement and integrity, won by **CYNTHIA CHANDLER**.

THE CHELMSFORD TEACHERS ASSOCIATION SCHOLARSHIPS — Given by the Chelmsford Teachers Association in memory of deceased members and awarded to seniors who have fulfilled the scholarship and citizenship requirements. This year given to **DOROTHY VROUHAS**, **PRISCILLA FRANCES HOYT**, and **JOHN LEONARD MARTIN**.

THE CLASS OF 1906 SCHOLARSHIP — Given by the Class of 1906 to a high ranking student who plans to go to a Teachers College, awarded to **ANNE MARIE CROWE**.

THE CENTER SCHOOL PARENT TEACHER ASSOCIATION SCHOLARSHIP — a \$200 scholarship to aid in the furtherance of the education of a senior boy or girl. This scholarship must be applied for and selection is made from the applicants by a committee of parents and teachers, won by **EDWARD SPAULDING PERZEL**.



Well!!



Pretty as a picture



Serious concentration



Really?



Oh, yeah!



As I said . . .



Need any help?



Busy Bees



Wow!



Just looking.



A backward glance.



Is everybody happy?



Muscle bound.



Just relaxing.



So sad!



Hey, look.



Mutt and Jeff.



Every inch counts.



Don't do it!



What're ya doin'?



Watch where you are going.



Too much.



Ballerina.



How's the weather?



A helping hand.



Don't you dare!



Now, let's do it right.



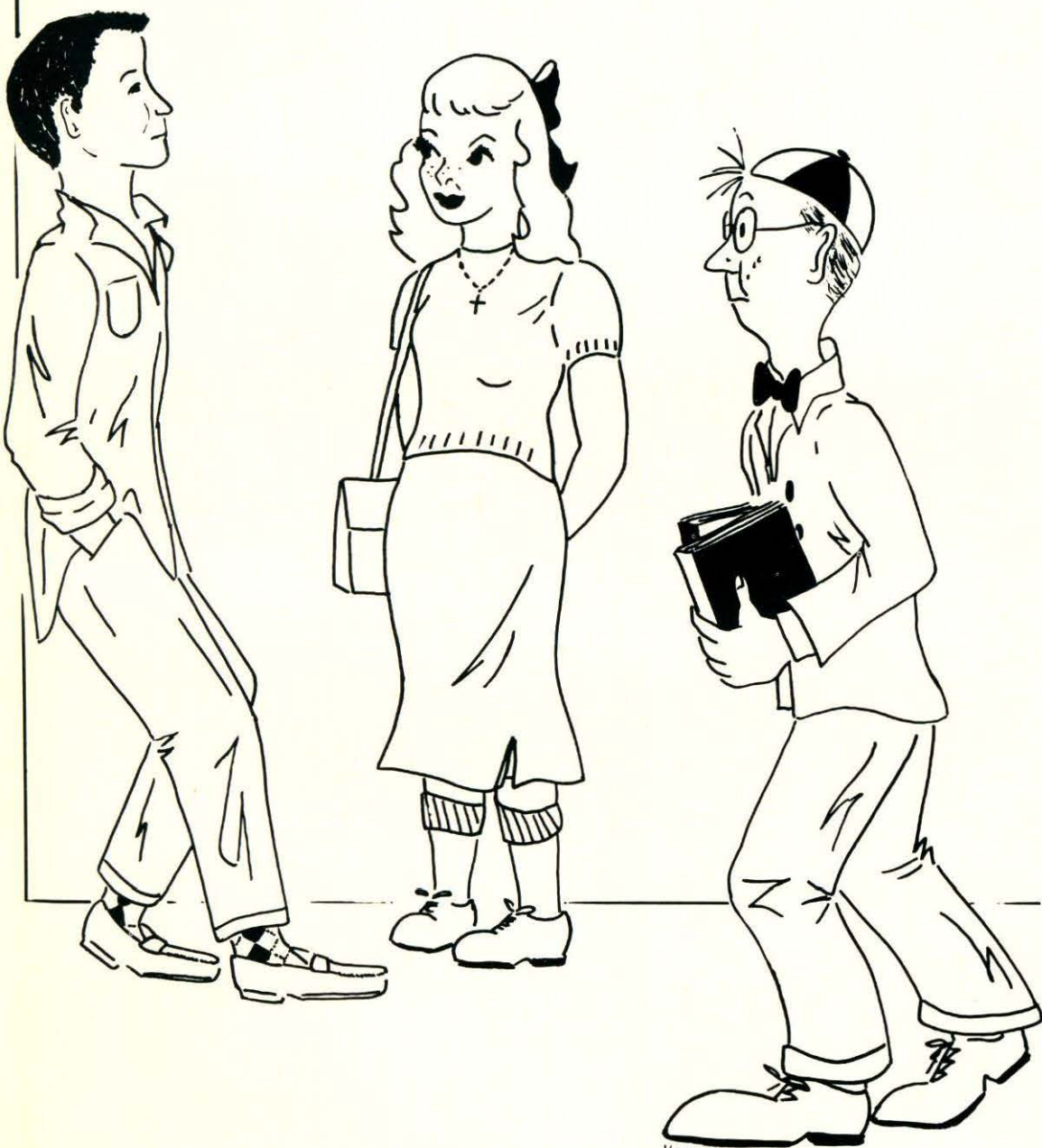
Jam session.



Make yourself comfortable.



It really was funny



KATHRYN THOMAS

ONCE UPON A TIME

Junior Class



President—Albert Egan

Vice-President — Martha Crane

Secretary — Judith Lamb

Treasurer — Diane Archer

Faculty Advisers — F. Christine Booth and Costas Kevghas

Adams, Dorothy
Altemus, Carolyn
Auger, Armand
Bacon, Eleanor
Baron, Bruce
Bell, Ronald
Belleville, Carol
Blondin, Diana
Bowers, Elizabeth
Brodley, Bruce
Brooks, Barbara
Broscombe, Valerie
Brow, Fred
Brown, Donald
Brown, Roger
Bujnowski, Pauline
Burke, Daniel
Cahill, Susan
Cahill, Thomas
Caron, Armand
Charest, Dorothy
Chute, Gail
Chute, William
Clark, Elizabeth
Collins, Loretta
Connor, Charles
Corcoran, Patricia
Cossete, Roland
Cullen, Judith
Cullinan, Patrick

Daigle, Richard
Daron, Fred
Doak, Shirley
Donaldson, Robert
Doubleday, Sandra
Drew, Donald
Dutton, Bryant
Englund, Cynthia
Flynn, Ann
Gagne, Raymond
Gagnon, Robert
Gleason, Frederick
Gordon, Diane
Gosselin, Alfred
Grenier, George
Harper, Ruth
Harvey, Sandra
Hehir, Joseph
Henderson, Carole
Hildreth, Fred
Howard, Elizabeth
Howard, Janet
Hoyt, Deborah
Johnson, Philip
Kenyon, Mary
Kenyon, William
Killen, Cynthia
Korsak, William
Landoch, Kathleen

Leedberg, Janet
Lemay, Dolores
Linnell, Joan
Lovering, Ann
MacDonald, Judith
Marcotte, Raymond
McCoy, John
McDonough, Richard
McEnaney, Barbara
McGillivray, Kenneth
McGlew, Margaret
McGovern, Paul
McLean, Mary
Midgley, William
Monette, Francis
Moore, Robert
Morrissey, Kenneth
Morton, Barry
Mosley, Nancy
Mungovan, John
Murphy, Elizabeth
Navoy, Michael
Nelson, Lorraine
Nicodemus, James
Nordin, Patricia
Oliver, Patricia
O'Neil, Sandra
Ostman, Barry
O'Sullivan, Marlene

O'Sullivan, William
Parent, Elizabeth
Patterson, Rachel
Patton, Thomas
Pearson, Robert
Pimentel, Joseph
Pomerleau, Diane
Quinn, Kieron
Reeves, Mary
Reid, Russell
Rocha, Mary
Russell, Daniel
Shaughnessy, Eileen
Shedd, Judith
Simpson, Georgia
Small, Cynthia
Smith, Judith
Sousa, James
Sullivan, Roger
Thayer, Richard
Thompson, Paul
Vennard, Peter
Walsh, Eugene
Webster, Janice
Wellington, Charles
Wetmore, Ronald
Whitesides, James
Winterbottom, John
Wright, Beverly
Wright, Charles

Sophomore Class



President — Richard Morrissey

Secretary — Anne St. Germain

Vice-President — Susan Medin

Treasurer — Kathryn Crane

Faculty Advisers — Martha F. Kinneen and Stanley J. Suchodolski

Abely, Edward
Auger, Lea
Auger, Pauline
Auger, Richard
Banks, Phyllis
Bauch, Frances
Bean, Barry
Bellwood, Leslie
Berger, John
Bissonnette, Robert
Blackadar, Brenda
Blecharczyk, Stasia
Blomberg, Karin
Boumil, Virginia
Braga, Roberta
Buchan, Bonnie
Burke, Maureen
Burlamachi, Mark
Cafiso, Marion
Carkin, Sandra
Carkin, Wesley
Churchill, Gail
Clark, Gerald
Cole, Robert
Connor, Janet
Connors, Jacquelyn
Conrad, Mary Eileen
Constantine, Bette
Cook, Prudence
Corfield, Norman
Coupe, Bradford
Crane, Eugene
Crockett, Richard
Cummings, John
Curran, Joseph
Cutcliffe, Bruce
DeBarge, Paula
DeSelle, William

Deuel, John
Ducharme, Suzanne
Eaton, Dorothy
Elliott, Sandra
Emerson, John
Falardeau, Joseph
Fogg, Dorothy
Gagnon, Lois
Giffin, Lois
Gilbride, Donald
Golubisky, Anne
Grondine, Claire
Hall, Janet
Hall, John
Hanson, Brenda
Hayes, Ruth
Henkel, Harold
Hicks, Bruce
Hollingworth, Peter
Hooper, Francis
Hope, Elizabeth
Horton, Frederick
Hughes, Robert
Jason, John
Johnson, Alice
Johnson, David
Johnson, Susan
Johnstone, Robert
Kaknes, Jane
Kay, Frederick
Kennedy, Mary Ann
Kiberd, Richard
Kirk, Thomas
Koch, Geraldine
Korsak, Charles
LaCourse, John
LaHaise, Paul

Lane, Frederick
Lane, Ruth
Larkin, Walter
Larson, Donna
Lee, Richard
Leedberg, Raymond
Lemire, Elaine
Lessard, Doris
Livingston, Charles
Lupien, Linda
MacKenzie, William
MacLean, Donna
Magnant, Mary
Manahan, Patricia
Mason, Joyce
Maybury, Judith
McBride, Gerald
McClellan, Henry
McConeghy, Robert
McDonough, Donald
McGovern, Edmund
Mentas, George
Mercier, Thomas
Mercier, William
Mooers, Neil
Morton, Deborah
Mosley, Leonard
Mountain, Virginia
Mowll, Judith
Mueller, Paul
Murphy, Judith
Murphy, Margaret
Nadeau, Leon
Nault, Marie
Nichols, Lois
Nicholson, Paula
Olsen, Edith

Paduch, Patricia
Parker, Ann
Parks, Ira
Pearson, Priscilla
Perry, Edward
Phillips, Gail
Pihl, Sandra
Poppewell, Barbara
Purdy, James
Reeves, Jane
Regan, Jacqueline
Reid, Lois
Robinson, Ellen
Rogers, Beverly
Rousseau, Robert
Roymans, Emil
Russell, Carl
Santamour, Carol
Savard, Linda
Scaplen, John
Schliebus, Robert
Shawcross, Ronald
Shay, Susan
Swallow, Thomas
Swett, Ruth
Tassios, George
Tebeau, Carolyn
Thomas, Nancy
Thomson, Gaye
Townsend, Johanne
Tucker, June
Turner, George
Walsh, William
Watson, Deborah
Watt, Robert
Welch, Roger
Woods, George
Ziemba, Frances

Freshman Class



President — Sandra Dupee

Treasurer — Frederick Field

Vice-President — Joyce Knapp

Secretary — Linnea Peterson

Student Council Treasurer—Elizabeth Vaipan

Student Council Representative—Ronald Desmarais, Judith Harrington

Faculty Advisers — Shirley H. Hardy and John J. Dunigan, Jr.

Aker, Joyce
Anderson, Donald
Armitstead, Cheryl
Auger, Gloria
Avila, Evelyn
Ayers, Linda
Ayotte, Raymond
Banks, Cynthia
Barker, Donald
Beauregard, Richard
Beliveau, William
Bell, Norma
Belleville, Shirley
Benoit, Suzanne
Bernacki, Katherine
Berry, Laural
Blake, Sandra
Blomgren, Roger
Blott, Eleanor
Boudreau, Albert
Boudreau, Robert
Bowser, Carole
Briana, Carolyn
Brodley, Raymond
Brown, Gene
Burkinshaw, Barbara
Carey, Nancy
Caron, Gary
Cassidy, Shelia
Chute, Sandra
Clark, Carlton
Clark, Kathleen
Collins, Eleanor
Connor, Patricia

Conway, John
Cooke, Wendy
Corey, Robert
Cossette, James
Cullen, John
Curran, Catherine
Daron, Colleen
Decatur, Joan
DeFlumeri, Sherrill
Delaney, James
DeSelle, Joan
Desmarais, Ronald
Dionne, Elaine
Dirubbo, David
Dittmer, Carlyn
Donaldson, Barry
Dorsey, John
Drescher, Edwin
DuCom, Patricia
Dunlavey, Patricia
Dupee, Sandra
Dyke, Walter
Eaton, Geraldine
Egan, Joanne
Engel, Ronald
Eno, Douglas
Fanning, Clarence
Farrow, David
Field, Frederick
Fisher, Mary
Foster, Michele
French, Diane
Gervais, Robert
Gervais, Roland

Gibbons, Carole
Gifford, James
Gould, Burton
Gravelle, Jo-Ann
Grondine, Estelle
Hadley, Edward
Hadley, Vaughn
Haithwaite, G. Raymond
Hall, Edward
Hansen, Ann
Harper, Marilyn
Harrington, Judith
Hart, John
Hoxie, Richard
Hehir, Timothy
Kemp, Sharon
Kirk, Arthur
Kirkpatrick, Beverly
Knapp, Joyce
Kneeland, Frances
Knowles, Judith
Kydd, David
Lamy, Carol
Laughton, Charles
Lebedzinski, Barbara
Lee, Karen
LeMasurier, Eunice
Litchfield, Deborah
Littlefield, Elaine
Lobas, Royal
Logan, James
MacKinnon, Robert
MacQuesten, Rosemarie
Majeau, David

Manahan, Louise
Manseau, Richard
Marsden, Clifford
Marshall, David
Masson, Louis
McEnaney, Raymond
McMaster, Roy
McSheehy, Ronald
Medeiros, Wayne
Michalowski, Mary
Morris, Gertrude
Morrison, Charles
Mortali, Roberta
Niemaszyk, Barbarann
Nolet, Ralph
Oczkowski, Joseph
Olsen, Geraldine
O'Rourke, Maureen
O'Sullivan, Joan
Page, Pauline
Patterson, John
Peterson, Linnea
Pettee, F. Christy
Phelps, Thomasina
Picken, Peter
Pigeon, Mary
Pope, Patricia
Pouliot, Ernest
Pouliot, Priscilla
Prescka, Sally
Ready, Dennis
Reid, Doris
Remick, Sara
Ricciardi, Diana

Rondeau, Lillian
Sarre, David
Shay, Martha
Shell, Gary
Shore, Donald
Silva, Beverly
Simpson, Charles
Spaulding, Brenda
Spinazola, Gwendolyn
Spinazola, Joseph
St. Pierre, Judith
Stamp, James
Staveley, Joseph
Staveley, Priscilla
Sullivan, Daniel
Tedesco, Leo
Therjault, Robert
Tousignant, Constance
Tower, Marion
Vaipan, Elizabeth
Vinecombe, Linda
Walker, Barbara
Walker, Carolyn
Wells, Sue Ann
Whalen, Ann
Whalen, Louise
Whitcomb, Warren
Wolcott, Alvin
Wolfgang, Andrew
Woods, Geraldine
Worthley, Kelvin
Zabierek, Judith
Znoj, Patricia







The Athletic Association



HOMEROOM REPRESENTATIVES

GIRLS

Janet Bell
 Carole Bowser
 Elizabeth Clark
 Kathryn Crane
 Martha Crane
 Sandra Dupee
 Janet Hall
 Joyce Knapp
 Judith Kroll
 Donna MacLean
 Barbara McEnaney
 Susan Medin
 Mary Michalowski
 Mary Reeves
 Priscilla Staveley
 Elizabeth Vaipan
 Sandra Witts

Boys

Donald Anderson
 Daniel Burke
 Bradford Coupe
 John Cummings
 Donald Desmarais
 Albert Egan
 Peter Goodwill
 David Kydd
 John LaCourse
 Donald McDonough
 Kenneth McGillivray
 Paul McIntire
 Emil Roymans
 Charles Simpson
 Peter Vennard
 Warren Whitcomb
 Kelvin Worthley

Faculty Advisers — Walter Copley, John T. Conrad

This year the Athletic Association is made up of almost the entire student body of Chelmsford High. In the middle of the year, Mr. Walter Copley, who had been promoting our progress, resigned from our school to join the faculty of Lowell State Teachers College. Mr. John T. Conrad came to our assistance and helped us for the remainder of the school year.



Cheerleaders



SENIORS

Geraldine Keddie, Capt.
Carolyn Howell
Marilyn Kydd
Sandra Ricciardi

JUNIORS

Carol Anderson
Valerie Broscombe
Martha Crane
Ruth Harper
Barbara McEnaney
Patricia Nordin
Mary Reeves
Judith Shedd

SOPHOMORES

Gail Churchill
Karin Blomberg
Deborah Watson

Arrayed in maroon Bermuda skirts, shaker-knit sweaters, and knee socks, the Chemsford cheering lassies encouraged the gridiron heroes to victory during the autumn months. Loyal to the cheerleaders was their new coach, Miss Margaret Kavanagh, who accompanied them to every game. Fancy marching and snappy cheers were trade marks of this year's squad.

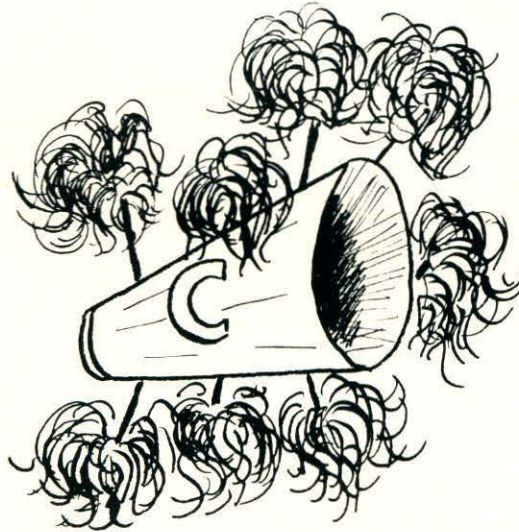
Santa Claus was welcomed to Greater Lowell in the midst of a fancy stepping trip through downtown Lowell.

Early in December the girls changed uniforms and alternated costume and color amid much confusion. The close quarters of the gymnasium increased their enthusiasm and gave opportunity for attempting more intricate cheers. "Sounding Off" by the cheering squad was a constructive way of aiding school spirit. It was with sincere gratitude to their coach, Miss Margaret Kavanagh, that the cheerleaders finished a most successful season.

C-H-E-L-M-S-F-O-R-D



T-E-A-M Yea, Team
 T-E-A-M Yea, Team
 T-E-A-M Yea, Team
 Ra, Ra, Team Yea !!



F-I-G-H-T Fight
 F-I-G-H-T Fight
 F-I-G-H-T Fight
 you gotta fight
 boys you gotta
 FIGHT !!



Football

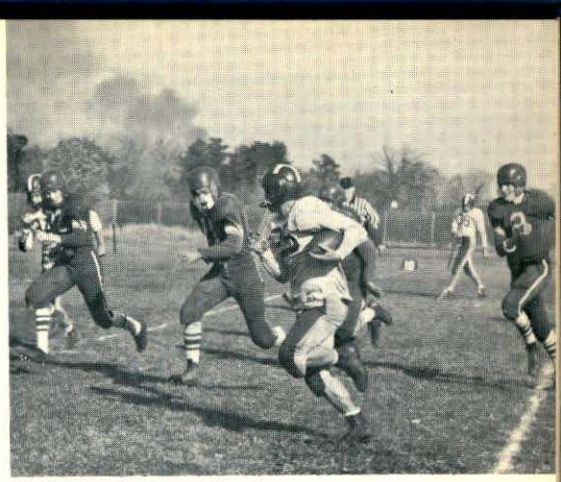


Our football team, under our hustling and able co-captains Bob Prescott and Bert Scaplen, completed the best season in the twenty-nine year history of Chelmsford High School football. Coach Joe Nolan and his staff, Mr. Gene Macomber and Mr. Frank Hill, took a green inexperienced squad and turned it into a unit that finished third in the state for Class D schools. Prior to the opening of the grid season this prediction was made for the team. "With luck a three win - six loss season." The final record is eight wins — one loss.

The campaign started with a 48-0 rout of hopeless Wilmington. One could then tell of the Lions' promise but also of their inexperience. The latter showed up the following Saturday when the Lions posted their only loss of the year to Tewksbury. From that game on, the "Maroon and White" played like a different team as they whipped Dracut, defending champs, by a 26-7 count and a strong Class C Punchard combine 25-7. In the Punchard game, the Lions broke a ten game winning streak at that school and appeared to be at their peak. The next three games were all resounding victories as Ayer, Ipswich and Weston were taken in stride. With just two games of the regular season remaining, the Lions were face to face with a powerful Class C North Andover team which, boasting a formidable 6-1 record, also fell before the Nolanmen to the score of 20-0. This left only the traditional game with Billerica on Thanksgiving. With the team in a position to have the best record in Chelmsford football history, the Lions did not let it go as they fought to a 27-6 victory.

This season also found two of our boys on the All-Scholastic squad and nine boys made the All-Suburban list, five of which made the first team. Through graduation this year the team will lose co-captains Bert Scaplen and Bob Prescott, Bob Ingalls, Paul McIntire, Ron Aubrey, Pete Goodwill and Wayne Kilburn. Best of luck to next year's team and its co-captains Fred Gleason and Bob Gagnon.

The team and the coaching staff are most grateful to their many loyal rooters and to the members of the P. T. A. for their inspiring support throughout the season. Also, they extend their sincere thanks to Mr. Edward Krasnecki of the Chelmsford Newsweekly for the jackets he presented to the lettermen. As usual, the members of the Booster Club manifested their interest and faithfulness to our athletes. During the season it provided the towels for the hard working squad members. As a final gesture of goodwill, with contributions from our local merchants, the Boosters gave the boys a banquet and gala evening to wind up the season.



| | | | |
|------------|-----|---------------|----|
| Chelmsford | 48 | Wilmington | 0 |
| Chelmsford | 7 | Tewksbury | 20 |
| Chelmsford | 26 | Dracut | 7 |
| Chelmsford | 25 | Punchard | 7 |
| Chelmsford | 25 | Ayer | 0 |
| Chelmsford | 34 | Ipswich | 6 |
| Chelmsford | 47 | Weston | 6 |
| Chelmsford | 20 | No. Andover | 0 |
| Chelmsford | 27 | Billerica | 6 |
| <hr/> | | <hr/> | |
| Total for | 259 | Total against | 52 |
| Won - 8 | | Lost - 1 | |



A is the ambulance that's waiting outside
 B is the bump that gets one a ride
 C is the center who weighs half a ton
 D is the dent when he falls upon one
 E is the end who is towering and fast
 F is the fullback who throws him the pass
 G is the guard who holds down the line
 H is the half and a chance to recline
 I is the impact when two players meet
 J is the jar from head down to feet
 K is the kick one gets in the face
 L is the limp from foeman's embrace
 M is the mud that gets richer each minute
 N is the nose that gets rubbed around in it
 O is the opening seen in the line
 P is percussion from hips, calves, and spine
 Q is the quarterback, refusing to yield
 R is the run he makes down the field
 S is the score, a million for us
 T is the touchdown that made all the fuss
 U is for under, one's apt to be
 V is for nothing but our victory
 W is for waterboy, most needed of all
 X marks the spot where they piled on the ball
 Y is for you, whose cheers help us go
 Z is the zero we wish for our foe.

Perry Delmore '44



Field Hockey



The Chelmsford High School Girls' Field Hockey team, led by its co-captains, Janet Bell and Alberta Jones, has had a successful season this year under the able direction of Miss Carol Murphy. Miss Murphy, who came to us from the University of New Hampshire, has added spirit as well as know-how to our team.

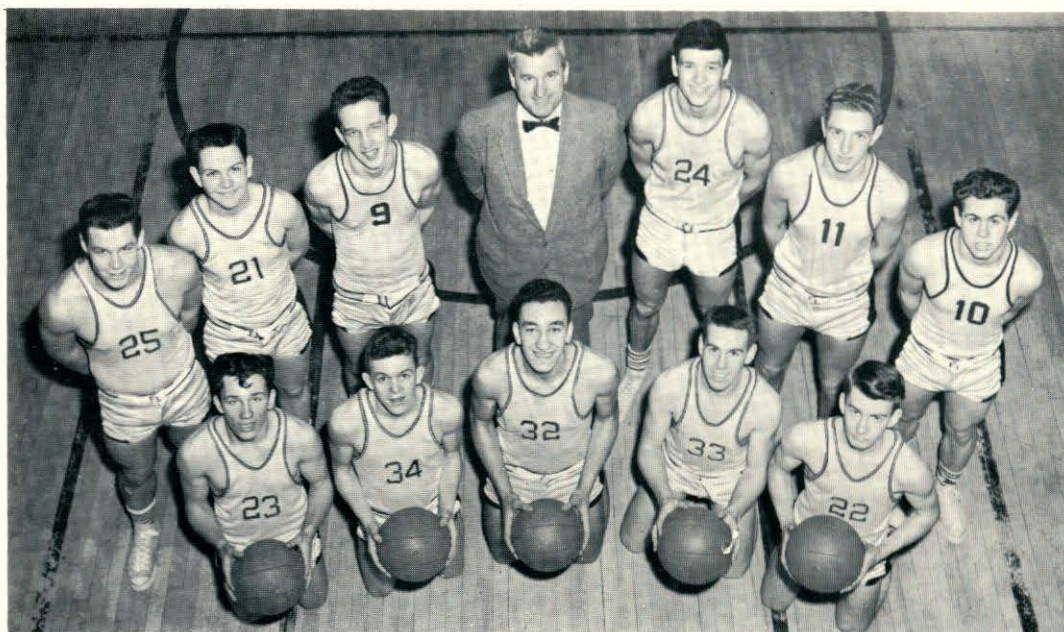
The team's points were scored by Janet Bell, Judith Kroll, Katherine Morrow, and Ann Marie Sehlstedt, who were backed with enthusiasm and skill by other players on the team.

Best of luck to next year's team co-captained by Ann Lovering and Beverly Wright.

| SCORES | | | | | | | |
|--------|---|-----------|-------|-----------------|---|---------------|---|
| CHS | 0 | Acton | 2 | CHS | 0 | Acton | 1 |
| CHS | 3 | Billerica | 1 | CHS | 1 | Woburn | 0 |
| CHS | 5 | Billerica | 0 | CHS | 0 | North Andover | 1 |
| | | | CHS 2 | North Andover 2 | | | |



Boys' Basketball



Once again our basketball team, under the expert guidance of Coach Murray B. Hicks and led by its hustling captain, Arthur Provencal, enjoyed another successful season. We compiled a creditable record of thirteen wins and five losses. We finished second to North Andover in the Greater-Lowell Suburban League. In league competition we had a record of ten wins and two losses, both to North Andover. In non-league competition we won three games and lost three. As in the past few years, we qualified for the Eastern Massachusetts Tech Tourney. The team journeyed to Natick but lost a hard fought game to Silver Lake 59 - 53. We wish the best of luck to next year's team and Captain Ken McGillivray.

SCORES

| | | | | | |
|--------|-------------|----|--------|-------------|----|
| CHS 57 | Pepperell | 35 | CHS 76 | Dracut | 42 |
| CHS 84 | Maynard | 54 | CHS 58 | No. Andover | 66 |
| CHS 54 | Pepperell | 59 | CHS 37 | Weston | 49 |
| CHS 44 | No. Andover | 59 | CHS 66 | Tewksbury | 58 |
| CHS 50 | Maynard | 38 | CHS 71 | Wilmington | 28 |
| CHS 51 | Tewksbury | 18 | CHS 92 | Burlington | 57 |
| CHS 99 | Wilmington | 33 | CHS 81 | Billerica | 33 |
| CHS 72 | Burlington | 51 | CHS 82 | Dracut | 48 |
| CHS 62 | Billerica | 54 | CHS 53 | Silver Lake | 59 |

WON 13

LOST 5



MURRAY HICKS
Varsity Coach



FRANK HILL
J. V. Coach



Girls' Basketball



Although the girls on the basketball squad were not champions this year, they considered this a successful season. The satisfying experience of working together for the good of the team and of developing the true spirit of sportsmanship made this year one to be remembered.

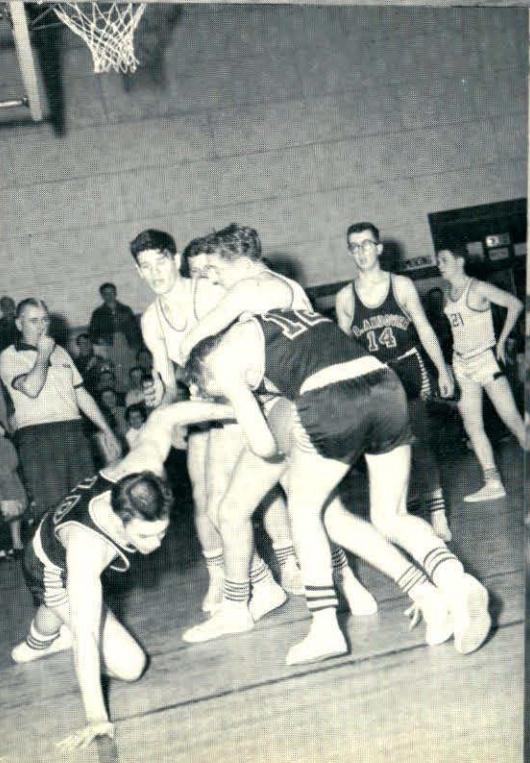
In the forward courts were Co-captain, Kay Morrow, Smitty Smith, and Berta Jones. In the back court were Co-captain Lila Crowley, Beth Simpson, and Anne Marie Sehlstedt. Pat Thompson, Polly Page, and Pat Paduch did fine jobs of substitution.

Much credit should be given to Miss Carol Murphy, coach, who came to us this year from the University of New Hampshire. We have every confidence that the team will be successful next year. With the excellent coaching of Miss Murphy and the leadership of Co-captains elect, Pat Nordin and Tisha Oliver.

SCORES

| | | | | | | | |
|-----|----|--------------|----|-----|----|-------------|----|
| CHS | 25 | Westford | 33 | CHS | 28 | Billerica | 27 |
| CHS | 82 | St. Anne's | 34 | CHS | 67 | Dracut | 34 |
| CHS | 49 | St. Joseph's | 36 | CHS | 55 | No. Andover | 47 |
| CHS | 30 | Methuen | 37 | CHS | 33 | Westford | 36 |
| CHS | 50 | No. Andover | 61 | CHS | 58 | Tewksbury | 60 |
| CHS | 70 | St. Joseph's | 39 | CHS | 43 | Wilmington | 41 |
| CHS | 48 | Tewksbury | 41 | CHS | 52 | Burlington | 63 |
| CHS | 33 | Wilmington | 32 | CHS | 57 | Billerica | 42 |
| CHS | 45 | Burlington | 62 | CHS | 58 | Dracut | 50 |







Baseball



Last year's team under the watchful eyes of Coach Nolan and the leadership of Co-captains John Goodwill and Dave Weeks compiled a creditable record of 6 wins and 6 losses. In league competition we posted double victories over Tewksbury and Burlington, plus single wins over North Andover and Wilmington. We finished tied for third with Tewksbury in a strong Suburban League. The highlight of the season was Dave Weeks' 3-0 no hit win over Burlington. Through graduation we lost Co-captains Weeks and Goodwill and such other stalwarts as Murray Hicks, Gene Gilet, Jack Doole, Mike Desmarais, and "Red" Molleur.

Since the season will not have started when this book goes to press, we shall include only the schedule of this year's team and the wish for the best of luck to Co-captains Jerry Robinson and Pete Goodwill and the rest of the squad.

SCHEDULE:

| | | | |
|----------|---------------|--------|--------------|
| April 23 | Wilmington | May 17 | Methuen |
| April 26 | Billerica | May 21 | Punchard |
| April 30 | Tewksbury | May 24 | at Tewksbury |
| May 3 | at Burlington | May 28 | at Billerica |
| May 7 | at Wilmington | May 29 | Dracut |
| May 10 | North Andover | May 31 | at Dracut |
| May 14 | Burlington | | |

Athletic Awards

BASEBALL (1956)

John Goodwill, Co-captain
David Weeks, Co-captain
Ronald Bell
Omer Desmarais
John Doole
Robert Gagnon
Eugene Gilet
Peter Goodwill
Bryan Hehir
Murray Hicks
Charles Korsak
William Korsak
Donald McDonough
Kenneth McGillivray
Phillip Molleur
Gerald Robinson
Conrad Stone
Daniel Russell, Mgr.

FIELD HOCKEY

Janet Bell, Co-captain
Alberta Jones, Co-captain
Lea Auger
Lila Crowley
Judith Kroll
Katherine Morrow
Francine O'Sullivan
Patricia Paduch
Linnea Peterson
Kristin Roymans
Ann Marie Sehlstedt
Eileen Conrad, Mgr.
Patricia Oliver, Mgr.

FOOTBALL

Robert Prescott, Co-captain
Albert Scaplen, Co-captain
Ronald Aubrey
Ronald Bell
William DeSelle
Robert Gagnon
Frederick Gleason
Robert Gleason
Peter Goodwill
Edward Hall
Joseph Hehir
Bruce Hicks
Robert Ingalls
Philip Johnson
Wayne Kilburn
William Korsak
John LaCourse
Paul LaHaise
Paul McIntire
John Nicodemus
Ira Parks
John Scaplen
James Sousa
Richard Morrissey, Mgr.

MAJORETTES

Lorraine Charest, Captain
Diane Archer
Carol Belleville
Dorothy Charest
Anita Crouse
Sandra Harvey
Joyce Mason
Barbara Popplewell
Nancy Small
Brenda Vinecombe

BOYS' BASKETBALL

Arthur Provencal, Captain
Ronald Aubrey
Ronald Bell
Albert Egan
Peter Goodwill
Edward Hart
Robert Ingalls
Kenneth McGillivray
Albert Scaplen
James Sousa
Peter Vennard
Robert Gagnon, Mgr.

GIRL'S BASKETBALL

Lila Crowley, Co-captain
Katherine Morrow, Co-captain
Alberta Jones
Linda Lupien
Patricia Nordin
Patricia Oliver
Patricia Paduch
Pauline Page
Ann Marie Sehlstedt
Elizabeth Simpson
Carolyn Smith
Patricia Thompson
Kristin Roymans, Mgr.
Claire Watt, Mgr.

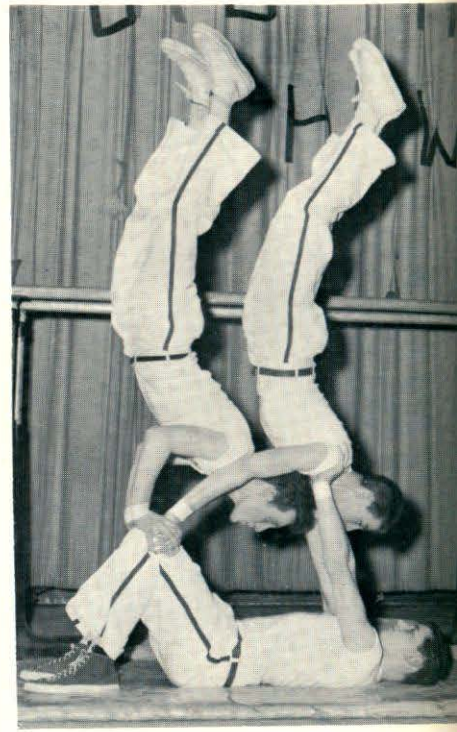
BAND

Phyllis Banks
Leslie Bellwood
Ruth Boumil
Elizabeth Bowers
Frederick Daron
Richard DeFreitas
Anne Golubisky
George Grenier
Deborah Hoyt
Mary Ann Kennedy
Richard Kiberd
Frederick Lane
Linda Lupien
Susan Medin
Neil Mooers
Barry Morton
Barry Ostman
Thomas Patton
Joseph Pimentel
Ellen Robinson
Mary Rocha
Nancy Thomas
Spiro Vrouhas
Roger Welch
Charles Wellington

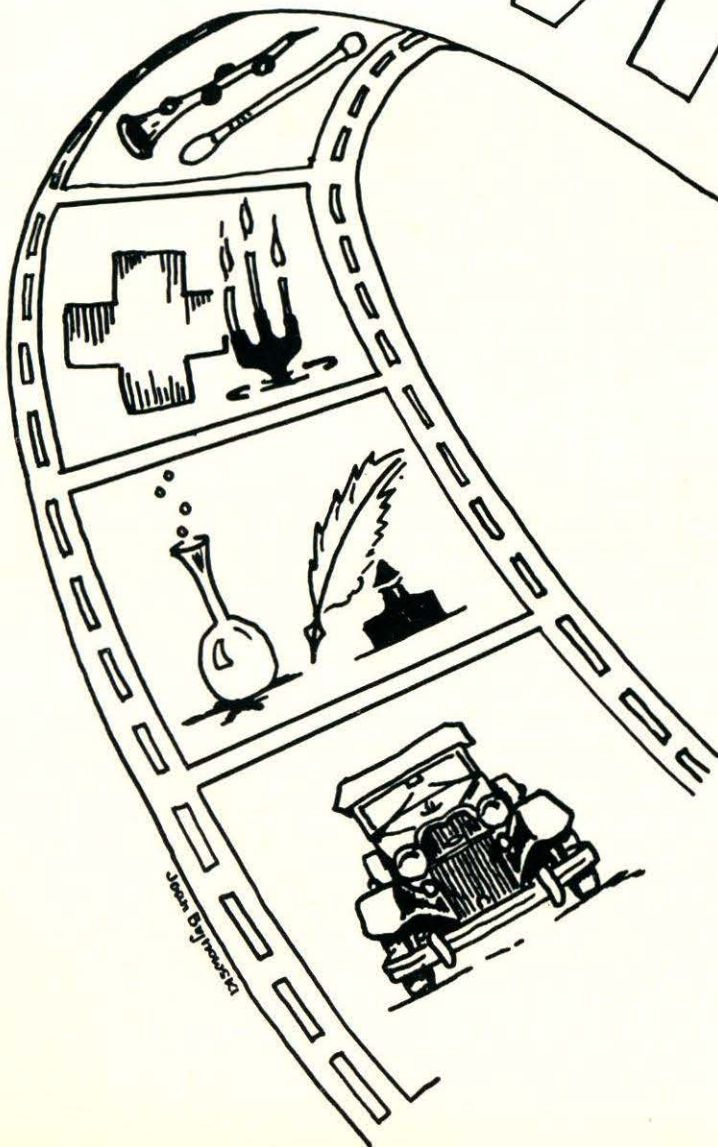
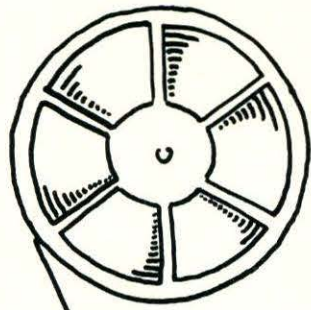
CHEERLEADERS

Geraldine Keddie, Captain
Karin Blomberg
Valerie Broscombe
Bonnie Buchan
Gail Churchill
Martha Crane
Ruth Harper
Carolyn Howell
Marilyn Kydd
Barbara McEnaney
Mary Reeves
Sandra Ricciardi
Judith Shedd
Deborah Watson

CHELMSFORD HIGH TALENT SHOW



ACTIVITIES



Student Council



| | |
|------------------------------------|---------------------------------------|
| President | Robert Ingalls |
| Vice-President | Raymond Marcotte |
| Recording Secretary | Elaine Lemire |
| Corresponding Secretary | Claire Watt |
| Treasurer | Elizabeth Vaipan |
| Senior Representatives | Sandra Ricciardi, Richard DeFreitas |
| Junior Representatives | Ann Flynn, Ronald Bell |
| Sophomores Representatives | Patricia Paduch, Richard Crocker |
| Freshmen Representatives | Judith Harrington, Ronald Desmarais |
| Assembly Chairman | Kristin Roymans |
| Welfare Chairman | Martha Crane |
| Social Chairman | Susan Medin |
| President of Senior Class | George House |
| President of Junior Class | Albert Egan |
| President of Sophomore Class | Richard Morrissey |
| President of Freshmen Class | Sandra Dupee |
| Faculty Advisers | Frederick G. Bardsley, John T. Conrad |

The Student Council, since its organization in 1950, has done much to foster the best interests of the student body.

This year, under the able guidance of Mr. Frederick Bardsley, we continued many of our established customs. We sold refreshments at all home football games. Book covers displaying the C. H. S. Lion were sold in the homerooms. The choice of programs for our paid assemblies was made by the Council as usual.

In keeping with the Yuletide spirit of giving, we selected a needy family to whom we presented clothing, food, and toys from the student body.

When Mr. Bardsley left C. H. S., Mr. Conrad became our adviser.

The Valentine dance and the Talent Show were both extremely successful affairs sponsored by the Council.

We wish to publicly thank Mr. Paul Bordeleau, Miss Margaret Kavanagh, and Mr. Costas Kevghas, for the many hours spent in producing such a fine show.

Our congratulations go to Richard DeFreitas, a Council member, upon being elected Chelmsford High School's Good Government Day representative.

All in all the Student Council has had a year of activity of which the members may be proud.

National Honor Society



| | |
|-----------------------|-------------------------|
| President | Lila Crowley |
| Vice-President | Carolyn Smith |
| Secretary | Kristin Roymans |
| Treasurer | Ann Marie Sehlstedt |
| Faculty Adviser | Miss F. Christine Booth |

SENIORS

| | |
|------------------|---------------------|
| Joan Bacon | Marcia Ricker |
| Elizabeth Boumil | Kristin Roymans |
| Linda Brown | Ann Marie Sehlstedt |
| Lila Crowley | Elizabeth Simpson |
| Robert Ingalls | Carolyn Smith |
| Raymond Johnson | Kathryn Thomas |
| Alice Perko | Claire Watt |

JUNIORS

| | |
|-------------------|------------------|
| Pauline Bujnowski | Ann Lovering |
| Elizabeth Clark | Raymond Marcotte |
| Loretta Collins | Barbara McEnaney |
| Sandra Doubleday | Barry Morton |
| Deborah Hoyt | Thomas Patton |
| Judith Lamb | Roger Sullivan |
| Kathleen Landoch | Beverly Wright |

The Chelmsford High School Chapter of the National Honor Society under the scholarly leadership of Miss F. Christine Booth, has now completed its fifth year at our school. The purposes of this organization are to create an enthusiasm for scholarship, to stimulate a desire to render service, to promote leadership, and to develop character in all students. Eligible juniors and seniors are installed after the second semester in an impressive ceremony to which their parents are invited. This year we were fortunate in having honor students from Punchard High School conduct this installation.

Each year the chief activity of this chapter is the sponsoring of "help sessions" for those seniors planning to take the College Board Examinations.

As it is a privilege and an honor to be a part of this organization, we hope that membership in this group will be the goal to which every student will aspire. Election to the National Honor Society is an achievement which sets any high school student on his way to success, whatever his plans may be.

Junior Red Cross



| | |
|-----------------------|----------------------|
| President | Janet Bell |
| Vice-President | Judith Kroll |
| Treasurer | Judith Shedd |
| Secretary | Marilyn Hicks |
| Faculty Adviser | Marjorie B. Scoboria |

HOMEROOM REPRESENTATIVES

| | | |
|-------------------|------------------|---------------------|
| Joan Bacon | Lois Griffin | Katherine Morrow |
| Elizabeth Bell | Lillian Gray | Patricia Oliver |
| Janet Bell | Claire Grondine | Francine O'Sullivan |
| Elizabeth Boumil | Helen Hayes | Marlene O'Sullivan |
| Linda Brown | Carole Henderson | Elizabeth Parent |
| Pauline Bujnowski | Alice Johnson | Diane Pomerleau |
| Elizabeth Clark | Judith Kroll | Helen Popplewell |
| Janet Connor | Kathleen Kulski | Jane Reeves |
| Prudence Cooke | Dolores LeMay | Carol Santamour |
| Lila Crowley | Ann Lovering | Georgia Simpson |
| Judith Cullen | Patricia Manahan | Judith Smith |

The Junior Red Cross has again lived up to its reputation for varied activity under the efficient guidance of Miss Marjorie B. Scoboria. Meeting faithfully each Wednesday the members produced cartoon books, crossword puzzle books, and posters for the various holidays. These were sent to the Bedford Hospital and to the Tewksbury State Infirmary to provide hours of enjoyment for the patients. Because of increased membership, the sophomores and the juniors and seniors met on alternate weeks.

An International Correspondence Album was sent to Switzerland and a similar album was received from Junior Red Cross members at McKinley High School in Honolulu, Hawaii. It is hoped that our album furnished as much pleasure for the Swiss as the Hawaiian one did for us.

The annual membership drive resulted in one hundred per cent student body membership which rounded out a successful year for this worthy organization.

Baton Twirlers



SENIORS

Lorraine Charest, Capt.
Anita Crouse
Nancy Small
Brenda Vinecombe

JUNIORS

Diane Archer
Carol Belleville
Dorothy Charest
Sandra Harvey
Joan Linnell
Judith MacDonald
Joyce Mason

SOPHOMORES

Janet Hall
Paula Nicholson
Barbara Popplewell

Director — Paul E. Bordeleau

This year the Baton Twirlers reported for practice to Band Director Paul E. Bordeleau. As an auxiliary unit of the band the twirlers presented a colorful and snappy performance at every football contest. Led by Captain Lorraine Charest, and ably assisted by Sergeant Brenda Vinecombe they marched in perfect step and performed with finesse the new techniques and arrangements of Mr. Bordeleau.

Drum Majorette Carol Belleville added an air of grace and pride as she led the band.



The three girls did justice to their gold uniforms and made colorfull forerunners for the neat and trim maroon and white followers.

The twirlers added interesting manoeuvres to Santa Claus' escort through downtown Lowell. They also featured in the Memorial Day parade, and at the Lowell Field Day.

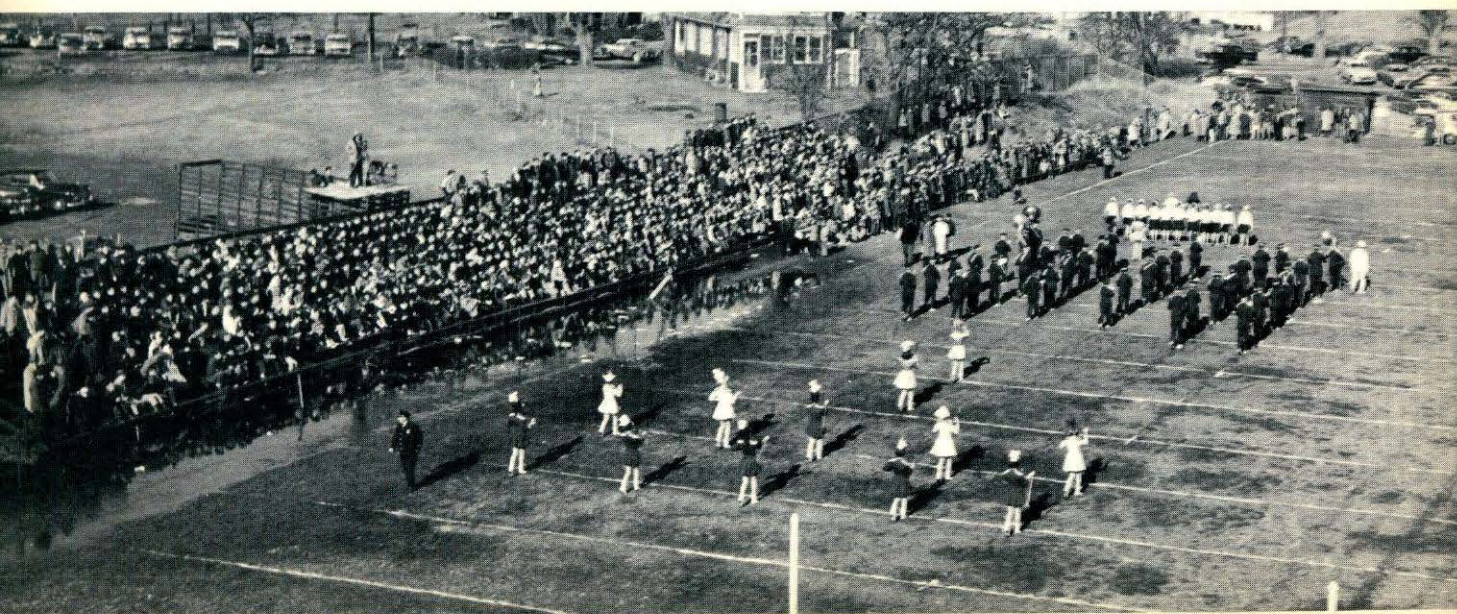
The Band



Once again the Chelmsford High School Band, under the expert leadership of Mr. Paul Bordeleau, has rendered us a year of "music in the air."

The year as usual has been a most active one, beginning in September with a trip to Massachusetts Institute of Technology, where a concert was presented by a Navy band. As in other years the band added spirit and zest to the football games, performing faithfully at home and away. The auditorium rang with music for our assemblies, both pep and paid, and the annual band concert was a tremendous success. In May, the band journeyed to Concord to attend the Northeastern Music Festival, and as is customary, led the annual Memorial Day Parade. Another successful year came to a close for the band as the seniors marched down the aisle to the measured beat of "Pomp and Circumstance."





Glee Club



This year we have two glee clubs at Chelmsford High School—the Girls' Glee Club and the mixed Glee Club. Under the direction of talented Mr. Paul Bordeleau, they have completed another successful season performing at concerts, assemblies, P. T. A. meetings, and the like, and have always been well received. Both groups have worked hard and have contributed much to the spirit and reputation of our school.



The Science Club



President John McCoy
Vice-President Paul Thompson
Secretary Barbara McEnaney
Treasurer Ann Flynn
Adviser Vincent C. Foderaro

The purpose of the Science Club is to provide the members with a wholesome and valuable way of spending leisure time. In the development of a project chosen and constructed by himself, each member is given an opportunity to put into practice something which he has learned or which stimulated his curiosity in the various science classes at Chelmsford High School.

On November 2, 1956, under the direction of Mr. Frederick Bardsley, the former adviser, a successful Science Night was held. Its purpose was to demonstrate the progress of the science and mathematics classes and to present Mr. John Thompson who spoke on "The Atom and Food."

On March 27, the annual Science Fair presented the projects of the members for examination by parents and friends and for evaluation by judges. The prize-winning exhibit was sent to the Regional Fair at the Massachusetts Institute of Technology in April.

The exhibits of five members represented Chelmsford at the Lowell Technorama at Lowell Technological Institute.

Mr. Vincent C. Foderaro, our new adviser, has competently and enthusiastically carried on the work in the Science Club so ably started by Mr. Frederick Bardsley and earnestly encourages the members to continue to explore the opportunities of science.

Lamplighters



MEMBERS

Carolyn Altemus
Janet Bell
Harry Brown
Pauline Bujnowski
Susan Cahill
Marie Castellano
Elizabeth Clark
William Delaney
John Flavell

Judith Kroll
Frederick Lane
Paul McIntire
George Mentas
Diane Pomerleau
Eileen Shaughnessy
Judith Smith
Richard Thayer
Janice Webster

Faculty Adviser — John J. Dunigan, Jr.

"The movies are better than ever." The Lamplighters, under the direction of Mr. John Dunigan, have completed another successful year. They have maintained a fine reputation for keeping our pupils well informed through educational films. These students are taught to run, reload, and set up the audio and visual equipment. Several new pieces of equipment have been added this year such as Hi-Fi, a movie projector, and a film strip projector.

Press Club



SENIORS

Joan Bacon
Elizabeth Bell
Elizabeth Boumil
Linda Brown
Janice Brown
Joan Bujnowski
Lillian Gray
Alberta Jones
Joanne Jason
Judith Kroll
Kristin Roymans
Ann Marie Sehlstedt
Elizabeth Simpson
Carolyn Smith
Claire Watt
Ann Whalen

JUNIORS

Pauline Bujnowski
Elizabeth Bowers
Elizabeth Clark
Frederick Daron
Ann Flynn
Ann Lovering
Diane Pomerleau
Elizabeth Parent
Mary Rocha
Judith Smith
Beverly Wright

The members of the Press Club, report for assignments every Thursday morning. Happily roaming the corridors during activity periods on the days following they seek major information from every source possible; from every teacher at one time or another, from the guidance office, from the coaches, and from the principal's office. By Tuesday the articles have been edited and typed and are ready for delivery to the North Chelmsford and the Chelmsford correspondents of the Lowell Sun and to the Chelmsford Newsweekly. In this way, the general public in Chelmsford is kept informed of the many and varied activities of Chelmsford High School. The club is indeed fortunate to have the efficient and skillful aid of its adviser, Mrs. Helen R. Poland.

Dramatic Club



President Katherine Morrow
 Vice-President Francine O'Sullivan
 Secretary Marilyn Hicks
 Faculty Adviser Martha Kinneen

The Chelmsford High School Dramatic Club became active again this year under the direction of Miss Martha Kinneen. The group, sparked by Miss Kinneen's sincere interest in the drama, read and discussed an interesting and representative group of plays including *The Merchant of Venice* and *Othello* by Shakespeare, *Pygmalion* by George Bernard Shaw, *Our Town* by Thornton Wilder, *Winslow Boy* by Terrance Rattigan, and *The Emperor Jones* by Eugene O'Neill.

On April 4 and 5, the presentation of *Arsenic and Old Lace* by Joseph Kesselring was the highlight of the club's season. The members found this a most worthwhile and rewarding venture as, under Miss Kinneen's guidance, each found an opportunity to utilize his talent whether it was pounding out publicity, painting flats, planning the lighting, collecting props, organizing the costumes, holding the prompting book, or interpreting the lines of the characters in the play itself. All worked together, teacher and members, to make a most successful production.

Pupils taking part in the play were:

| | |
|--------------------------------------|------------------------------------|
| Abby Brewster — Marcia Ricker | Officer Klein — Roger Swallow |
| Ann Lovering | Mr. Gibbs — Robert Watt |
| Martha Brewster — Katherine Morrow | Jonathan Brewster — Albert Egan |
| Janet Bentley | Dr. Einstein — Raymond Marcotte |
| The Rev. Dr. Harper — Gerald McBride | Officer O'Hara — George Mentas |
| Teddy Brewster — John Fisher | Lt. Rooney — Richard McDonough |
| Officer Brophy — Jay Whitesides | Mr. Witherspoon — Robert McConeghy |

Driver Education



This year the Driver Education class was bigger than ever. Mr. John Dunigan, who has so capably and faithfully served us, and his able assistant Mr. John Hughes, guided 90 anxious "license seekers" to success.

Fifty pupils signed up for the first semester; forty more for the second.

After learning the fundamentals of mechanics and the rules of the road in the classroom, the eager drivers-to-be took to the highway, with this thought in mind—"Drive Safely. The life you save may be your own."

"Let's learn safety from others.
Let's practice safety ourselves.
And let's teach safety to others."

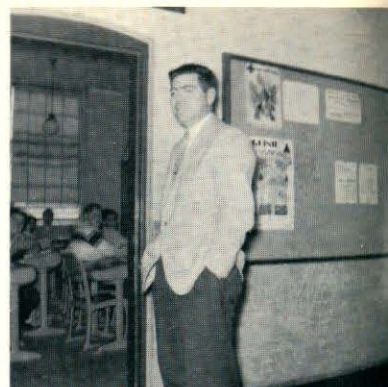
As the book says . . .



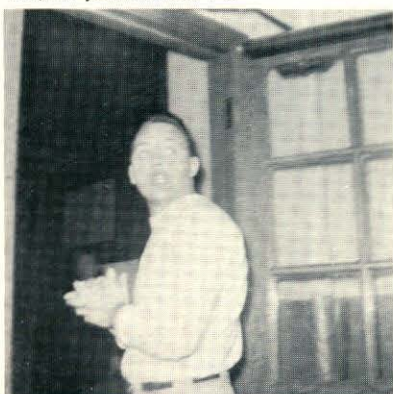
What a day . . .



I like it here . . .



Oh, no you don't . . .



I expect your best effort . . .



Good morning . . .



Oh, Pete . . .



I'll initial it . . .



The law of gravity . . .



All right, boys . . .



Come now . . .



I'll see you later . . .



Oh - Oh . . .



What have we here . . .



Stop that noise . . .



Music's the thing . . .



I'll just check on that . . .



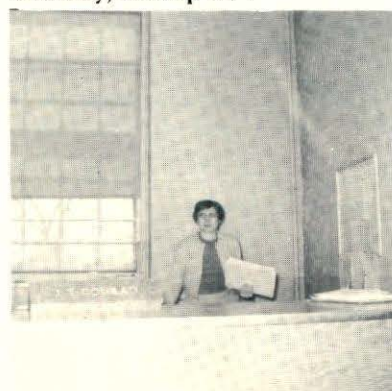
Get going . . .



We must get started . . .



Certainly, I'll help . . .



History shows us . . .



It's a good day . . .



It is not too difficult . . .



Now in industry . . .



Class History

FRESHMAN YEAR

With faces clear, fresh and expectant, we, the great and wonderful Class of 1957, enter in the year 2 B. C. (Before Cats). "Here we are! Where do we go?" Here we are, the last of the pre-war kids, the beginning of the problem child. For a while we follow the pattern of C. H. S. Up the stairs in the West, down the stairs in the East. Blue slips for absence, white ones for detention. Homework is done every night. Daily races down the hill to lunch. Surprise! ! Two of our teachers are as new as we are, Mr. Kevghas and Mr. LeBlanc. Mr. Kevghas masterminds our first spelling bee, and Mr. LeBlanc leaves us. Mr. Eames becomes guardian of the white rat. Our football and basketball teams were Suburban Champs. We all made the grade!

SOPHOMORE YEAR

Swarms of new teachers! Mr. Marchant arrives in his own school bus, Mr. Carney replaces Mr. Eames in the dissecting department, Mr. Pickett inherits Mr. Healey's chores in Room 30, Mr. Verre succeeds Mr. Ciszek in building the boys' muscles, Mr. Bordeleau takes over for Mr. Hahn in the rhythm region, Miss Lynch carries on for Miss Cordingly and leads our girls to basketball championship, and Miss Kinneen arrives and we bury Julius Caesar all over again. Our boys become football champs while a real lion cavorts on the field. New lunch tables and chairs! Our first United Student Fund Drive. Six bus loads of students go to Boston Garden to see our boys play a great game. Miss Hehir produces another successful Talent Show. Band members sport new uniforms at the annual concert. Tercentenary Week arrives, bringing welcome respite from classes. "Oh, no! Not finals again!" Another year has sped by.

JUNIOR YEAR

Mad Junior chemists invade the lab. Many new faculty members—Mr. Copley takes over Math, science, and managing athletics; Mr. Bardsley becomes our fourth biology teacher; Mr. Caliri comes to teach physical education. Rock and Roll fever hits C. H. S. Those haircuts! Our first successful science fair. Our class rings for which we wait an eternity just to have the boys "leave them at home." Our dance to fatten our class treasury. All our teams place second. Another tremendous talent show! Our classmates are inducted into the National Honor Society. Screech of of tires and clouds of dust after school. The "chirpers" are off! The great exodus of faculty. Miss Greenberg leaves us for Springfield; Mr. Caliri, for the priesthood; Miss Lynch, for marriage; Mr. Marchant, for Malden; Mr. Pickett, for California. Another year has gone by.

SENIOR YEAR

Seniors at last! ! ! Our school is bursting at the seams and popping the freshman over to the McFarlin School. Scads of new faces in addition to a multitude of frosh, one hundred sixty of them. We welcome Miss Murphy and Mr. Macomber and introduced them to the gym. Mr. Byrne, Mr. Suchodolski, Mr. Georgakakos, Mr. Hankinson, and Miss Kavanagh are assigned to replace our former friends. The McFarlin yard is hottopped. Now the busses arrive at the bottom of that hill! (pant! pant!) Our dances are most successful, when and if the boys dance. What's this? something new has been added. . . midterm marks for EVERYONE! Mr. Georgakakos leaves, replaced by Mr. Giralomo; Mr. Bardsley leaves, replaced by Mr. Foderaro; and Mr. Copley leaves, replaced by Mr. Kirby. Mrs. Jewett, the school nurse who has tended our wounds and has been our good friend all through school is recovering from her accident. We miss her very much and hope she will be back soon. Her sister, Mrs. Groves, has done a fine job of easing the pain of polio shots and caring for our health in general. Shriek of the power saw and grumble of the bulldozer announce the departure of trees in our front yard and the disappearance of part of our parking lot. Progress demands widening of Billerica Street at our expense. Once again Shakespeare turns over in his tomb as *Macbeth* is murdered in Room 33. Prom time comes and goes with a flutter of gay dresses, a whiff of beautiful corsages, a flash of white jackets, and a collapse of the hoarded funds. A *banquet* this year in place of Class Day! Our Yearbook comes out, we picnic, and we graduate! "Today we follow, tomorrow we lead."

HUMOR



KATHRYN THOMAS

Pictures No 4

Ronald Aubrey
Joan Bacon
Elizabeth Bell
Janet Bell
Robert Bennett
Janet Bentley
Donald Bergholm
Beverly Bissonnette
Elizabeth Boumil
Mary Brooks
Harry Brown
Janice Brown
Linda Brown
Joan Bujnowski
Marie Castellano
Lorraine Charest
Cora Clark
Thomas Connors
David Corfield
Anita Crouse
Lila Crowley
Maureen Curran
Alan Davidson
Richard DeFreitas
Joyce Dirubbo
Brenda Fall
John Flavell
John Fisher
Clayton Foote
Richard Gauthier
John Gonsalves
Peter Goodwill
Lillian Gray
Eleanor Hadley
Dennis Harrington
Edward Hart
Marilyn Hartley
Helen Hayes
Marilyn Hicks
Carolyn Howell
George House
Patricia Hulick
Robert Ingalls

buying elevator shoes
in a frying pan
without a ring
with a speech impediment
away from the troops
lacking courtesy
as a family man
working on a potato farm
ducking hard work
without Barbara
weighing 200 pounds
doing sloppy work
being inconsiderate
commanding a submarine
in shabby clothes
with a muffled giggle
raising her voice
in bell-bottom trousers
flunking the math course
wearing lipstick before 8:10 a. m.
as a bubble dancer
without a cheerful smile
looking for transportation
not knowing the "score"
as a blonde
loud and noisy
teaching school
subbing for Tom Thumb
immature and unfriendly
with a crew cut
the father of twins
as a ballet dancer
feeling blue
doing a Calypso number
being disagreeable and grouchy
buying clothes at Robert Hall's
not full of ideas
on time for school
tall and lanky
bashful and timid
with a registered car
without her license
selling lawn mowers

Artist Can Paint

Joanne Jason
Raymond Johnson
Alberta Jones
Geraldine Keddie
Kenneth Kemp
Wayne Kilburn
John Kimball
Judith Kroll
Kathleen Kulski
Marilyn Kydd
Richard Lewis
Jessamine MacKenzie
Paul MacIntire
Lianne McMillan
Dorothy Moreton
Katherine Morrow
Pauline Murphy
Ralph Nickerson
Francine O'Sullivan
Alice Perko
Helen Popplewell
Robert Prescott
Arthur Provencal
Shirley Quintin
Sandra Ricciardi
Marcia Ricker
Gerald Robinson
Kristin Roymans
Albert Scaplen
Ann Marie Schlstedt
Elizabeth Simpson
Nancy Small
Carolyn Smith
Bertha Szuch
Kathryn Thomas
Patricia Thompson
Brenda Vincombe
Spiro Vrouhas
Claire Watt
Ann Whalen
William Williams
Sandra Witts
George Zaharoolis

with a Joan of Arc haircut
being kidded by no one
without a wad of gum
warming the bleachers
on a trampoline
as a square
as a woman hater
with nothing to read
lonesome on Saturday night
as a pirate
as a brunette
not making the best of it
as a fashion designer
with no place to go
unhappy or uncooperative
without the last word
with a loud voice
early to bed
minus admirers
not petite
not neat
as a chess player
not looking sharp
without a serious look
without a wiggle
not doing her best
waltzing
idle
without a grin
without her gift of gab
without a heart throb
with long black curls
as a police woman
without her friends
walking
without a pet project
not talking in history
as Freddie The Free-loader
driving the school bus
dashing to and fro
subbing for Elvis Presley
not efficient
as a chimney cleaner

Class

| | | |
|--------------------|-----------------------------------|-----------------------------|
| Ronald Aubrey | Leaves his teeth | In his mouth |
| Joan Bacon | Leaves a soft voice | To Bruce Brodley |
| Elizabeth Bell | Dedicates her poetry | To the English Dept. |
| Janet Bell | Leaves her smile | For Mr. Hankinson |
| Robert Bennett | Leaves a rut in the parking lot | To Bruce Baron |
| Janet Bentley | Leaves her accent | To Paul McGovern |
| Donald Bergholm | Leaves his reserved manner | To Al Egan |
| Beverly Bissonette | Leaves | In an Imperial |
| Elizabeth Boumil | Bequeaths her vocabulary | To all illiterates |
| Mary Brooks | Leaves her intellectual curiosity | To Barry Bean |
| Janice Brown | Bequeaths her Malden Yearbook | To 1958 Yearbook Staff |
| Harry Brown | Wills a match | To the Lamplighters |
| Linda Brown | Leaves her easy name | To Robert Schliebus |
| Joan Bujnowski | Offers her artistic ability | To Mr. Hicks |
| Marie Castellano | Leaves her smart hairdos | To Freshman girls |
| Lorraine Charest | Relinquishes her perfect strut | To Judy MacDonald |
| Cora Clark | Wills her gift of gab | To John McCoy |
| Thomas Connors | Leaves for the South | To fight for his rights |
| David Corfield | Grants his mathematical ingenuity | To Conrad Stone |
| Anita Crouse | Offers her songs | To Mary McLean |
| Lila Crowley | Leaves her captaincy | To Pat Oliver |
| Maureen Curran | Donates her brothers and sisters | To those who have none |
| Alan Davidson | Leaves automatic transmissions | To Drivers' Ed. Class |
| Richard DeFreitas | Offers advice | To the lovelorn |
| Joyce Dirubbo | Leaves | In a Bronze Bomb |
| Brenda Fall | Leaves her colors | To the Rainbow girls |
| John Flavell | Leaves his retreads | On Chelmsford Street |
| John Fisher | Wills his build | To Bob Gagnon |
| Clayton Foote | Leaves Footprints | In the mud |
| Richard Gauthier | Leaves | For Hollywood |
| John Gonsalves | Leaves Bufferin | To the sufferin' (teachers) |
| Peter Goodwill | Leaves Chicquita | To the Democrats |
| Lillian Gray | Donates a physics notebook | To Jay Whitesides |
| Eleanor Hadley | Leaves her natural curls | To Mr. Green |
| Dennis Harrington | Wills his skis | To Brad Coupe |
| Edward Hart | Leaves his crash helmet | To Fred Gleason |
| Marilyn Hartley | Leaves her babysitting jobs | To work in an office |
| Helen Hayes | Offers her pony tail | To Cynthia Killen |
| Marilyn Hicks | Leaves her punctuality | To Percy T. |
| Carolyn Howell | Offers encouragement | To those left behind |
| George House | Leaves his gavel | To a leading Jr. |
| Patricia Hulick | Leaves her station wagon | To Susan Cahill |
| Robert Ingalls | Wills his trumpet | To Joe Pimentel |

Will

| | | |
|---------------------|-----------------------------------|----------------------------------|
| Joanne Jason | Offers her coiffeur | To Diane Archer |
| Raymond Johnson | Donates his hidden talents | To future Mech. Drawing students |
| Alberta Jones | Leaves her humor | For serious effort |
| Geraldine Keddie | Leaves a megaphone | To Bev Wright |
| Kenneth Kemp | Grants his glasses | To Mr. Nolan |
| Wayne Kilburn | Wills his turtle neck sweaters | To Freddie Brow |
| John Kimball | Bestows his love | On Freshman Girls |
| Judith Kroll | Leaves Honey | To Spin & Marty |
| Kathleen Kulski | Leaves to join | The Navy |
| Marilyn Kydd | Grants her dancing shoes | To Jim Sousa |
| Richard Lewis | Bequeathes a rosy blush | To Betsy Clark |
| Jessamine MacKenzie | Wills her freckles | To Dorothy Charest |
| Paul McIntire | Leaves his physique | To the undernourished |
| Lianne McMillan | Leaves her eyebrow pencil | To Maybelline |
| Dorothy Moreton | Leaves the Duplicator | To Secretarial Practice Class |
| Kay Morrow | Leaves her efficiency | To future office girls |
| Pauline Murphy | Wills her Irish temper | To Richard McDonough |
| Ralph Nickerson | Gives his Toni curlers | To Sandy O'Neil |
| Fran O'Sullivan | Presents her crown | To Pris Pouliot |
| Alice Perko | Leaves Dillon's | To Nancy Thomas |
| Helen Popplewell | Wills her ladylike manner | To Judy Cullen |
| Bob Prescott | Leaves his heirloom razor | To Bill O'Sullivan |
| Arch Provencal | Leaves his jokes | But no one wants them |
| Shirley Quintin | Leaves quietly | But will be missed |
| Sandy Ricciardi | Presents her wardrobe accessories | To Mary Reeves |
| Marcia Ricker | Wills her acting ability | To the Dramatic Club |
| Gerald Robinson | Wills his restless spirit | To Philip Johnson |
| Kris Roymans | Leaves a singer for C.H.S. | Her brother Emil |
| Bert Scaplen | Offers his sports know-how | To Kerry Quinn |
| Ann Marie Sehlstedt | Grants freedom of speech | To all |
| Beth Simpson | Leaves her petite size | To Armand Caron |
| Nancy Small | Leaves her modeling job | To Billy DeSelle |
| Carolyn Smith | Exchanges her Studebaker | For a Corvette |
| Bertha Szuch | Wills her long curls | To Judy Shedd |
| Kathryn Thomas | Leaves her horse | To Roy Rogers |
| Pat Thompson | Leaves the Volkswagon | To Leon Nadeau |
| Brenda Vinecombe | Leaves | To join Louella Parsons |
| Spiro Vrouhas | Donates a dozen eggs | To the Easter Bunny |
| Claire Watt | Leaves in her gentle way | For Jackson |
| Ann Whalen | Leaves 4 hoofs | For 4 Wheels |
| Billy Williams | Wills his tractor | To Gene Brown |
| Sandy Witts | Leaves her typing speed | To Marlene O'Sullivan |
| George Zaharoolis | Leaves for the | State House |

SPONSORS

\$25.00

George C. Moore Wool Scouring Mill, North Chelmsford
Southwell Combing Company, North Chelmsford
Suburban Dairy, North Chelmsford

\$20.00

L. G. Balfour Company, Attleboro
William P. Proctor Company, North Chelmsford

\$15.00

Cherry & Webb Company, Lowell
Norman E. Day, Inc., Westford

\$10.00

Kenneth A. Cooke, D.M.D., North Chelmsford
A Friend
Harvey's Building Supplies, Chelmsford
Homborg Gym Suit Company, Somerville, Mass.
"King-Plymouth" Sales & Service, opp. City Hall, Lowell
J. Kydd & Sons, Inc., 809 Stevens Street, Lowell
Pease Motors, Lowell
A. G. Pollard Company, Lowell
Triangle Store & Service Station, North Chelmsford
T. V. Shack, Inc., 29 Vinal Square, North Chelmsford
University Cap & Gown Co., Lawrence, Mass.

\$7.50

Albert W. Willis, M. D., Chelmsford
Wood-Abbott Company, Lowell

\$5.00

Harry Bass., Inc., Lowell
The Bon Marche, Lowell
J. Edmund Boucher, M. D., North Chelmsford
Foster Braga, East Chelmsford
William J. Burbeck Co., Lowell's Most Modern Dairy
George Carriel, M. D., North Chelmsford
Chelmsword Newsweekly, Inc., Chelmsford
Ralph H. Clements, O. D., Lowell
Colonial Hearststones, Antiques & Fine Arts, Chelmsford
Community Tree Service, Chelmsford
Crysler Company, North Chelmsford
L. Rodger Currie, D. D. S., Chelmsford
Eddie Hart's, Chelmsford
Evelyn's Pastry Shop, North Chelmsford
Fred's Gulf Service, North Chelmsford
Friendly Jack's Warehouse, Lowell
First Federal Savings & Loan Association, Lowell
H. E. Fletcher Company, Westford
Edward W. Freeman Store, Lowell
Gallagher's Drug Store, Lowell
Godin's Stores, Chelmsford
R. H. Greenwood & Sons, Chelmsford
Milton E. Hadley & Son Upholsterers, North Chelmsford
Dr. Jonathan Hall, Veterinarian, Lowell

SPONSORS (Cont.)

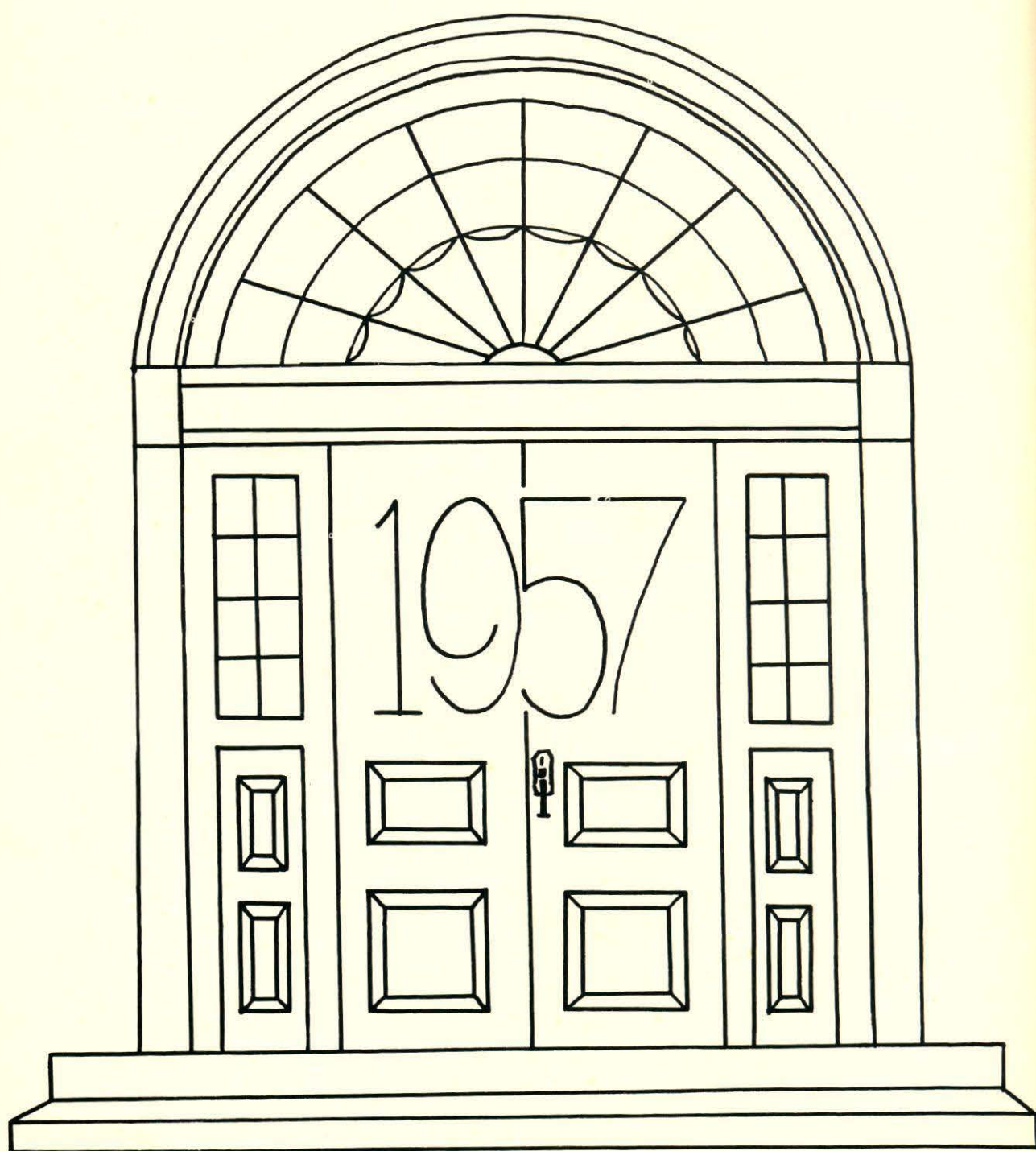
Harding Uniform & Regalia Company, Boston
Hi-Hat Roll-a-way, Lowell
Jack's Diner, Chelmsford
Josef's Inc., Lowell
Larson's Gulf Service, West Chelmsford
Dr. & Mrs. David A. Latham, Chelmsford
"Cal" Laughton, Florist, North Chelmsford
Lowell Five Cent Savings Bank, Chelmsford
Lowell Gas Company, Lowell
Lowell Motor Sales, Lowell
Lupien Farms, Inc., Chelmsford
Metro Music Center, Studios & Store, Lowell
Middlesex Supply Company, Lowell
Danny Mills' Men & Boys' Shop, Lowell
Molders Foundry Co., Inc., North Chelmsford
P. J. Murphy, North Chelmsford
Nabnasset Motor Service (Pete Morrow), Westford
New England Woodwind Exchange, Inc., Boston
Newman's, Lowell's Finest Store for Men and Boys, Lowell
North Chelmsford Hardware Co., North Chelmsford
Oxbow Cider Mill, Chelmsford
Page's Drug Store, Chelmsford
Carl A. E. Peterson, Chelmsford
Picken Printing Company, North Chelmsford
Princeton Market, North Chelmsford
Rainbow Spa, Chelmsford
Rex Potato Chip Co., Bradford
Ronnie's Texaco, Chelmsford
Septic Tanks Inc., Chelmsford
Skip's Diner, Inc., Chelmsford
Smiley's Service Station, Chelmsford
Roland J. Soucy T V & Appliance Co., Chelmsford
South Chelmsford Village Improvement Assoc., South Chelmsford
Sunny Acres Nursing Home, Chelmsford
Sunny Meadow Farm, South Chelmsford
Walter L. Twarog, M. D., Chelmsford
Gerard A. Vayo, Chelmsford
Vic's Drum Studio, Everything for the drummer, Lowell
Vinal Square Hardware, North Chelmsford
Vinal Square Variety, North Chelmsford
Charles M. Yarid, D. D. S., Chelmsford

OTHER CONTRIBUTORS

Alex's Service Garage, 89 Chelmsford Street, Chelmsford
Dr. & Mrs. John J. Barry, Chelmsford
Joseph J. Foley, Jeweler, Lowell
Mr. & Mrs. George Marchand, Jr., South Chelmsford

THANK YOU

We sincerely appreciate the help of our Official Class Photographer, **J. E. Purdy Company, Inc.**, of Boston, and of our professional and business friends. We are proud to have your names listed as sponsors of our Yearbook, **THE LION**.



JOAN BUYNOWSKI

We depart to lead.....



